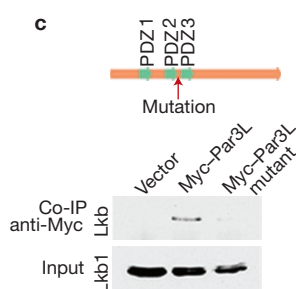


The Par3-like polarity protein Par3L is essential for mammary stem cell maintenance

Yongliang Huo and Ian G. Macara

Nat. Cell Biol. **16**, 526–534 (2014); published online 25 May 2014; corrected after print 30 May 2014

In the version of this Article originally published, the scale bars in Fig. 2c should have been labelled '3 mm'. In addition, a small red arrow indicating the location of the mutation was missing from Fig. 5c (shown below). These errors have now been corrected in the online versions of the Article.



Lipidation of the LC3/GABARAP family of autophagy proteins relies on a membrane-curvature-sensing domain in Atg3

Sangeeta Nath, Julia Dancourt, Vladimir Shteyn, Gabriella Puente, Wendy M. Fong, Shanta Nag, Joerg Bewersdorf, Ai Yamamoto, Bruno Antonny and Thomas J. Melia

Nat. Cell Biol. **16**, 415–424 (2014); published online 20 April 2014; corrected after print 6 June 2014

In the version of this Article originally published, the *x* axis labels 'WT' and 'K11L' on the graph in Fig. 5c were swapped. This error has now been corrected in all online versions of the Article.