

ARTICLE

Received 2 Feb 2013 | Accepted 9 Jul 2013 | Published 6 Aug 2013

DOI: 10.1038/ncomms3276

Structured cone arrays for continuous and effective collection of micron-sized oil droplets from water

Kan Li¹, Jie Ju¹, Zhongxin Xue¹, Jie Ma¹, Lin Feng², Song Gao³ & Lei Jiang^{1,4}

Environmental protection agencies and the petroleum industry require effective methods to separate micron-sized oil droplets from water. However, for most existing separation methods, phase separation occurs in the oil-water mixture. The remaining micron-scale oil droplets, which are not affected by phase separation, are difficult to handle with conventional methods on a large scale because of either a lack of separation ability or drawbacks in throughput capacity. Here we develop an oleophilic array of conical needle structures for the collection of micron-sized oil droplets, inspired by the collection of similar sized water droplets on conical cactus spines. Underwater, these structures mimic cacti and can capture micron-sized oil droplets and continuously transport them towards the base of the conical needles. Materials with this structure show obvious advantages in micron-sized oil collection with high continuity and high throughput.

¹Beijing National Laboratory for Molecular Sciences (BNLMS), Key Laboratory of Organic Solids, Institute of Chemistry, Chinese Academy of Sciences, Beijing 100190, China. ²Department of Chemistry, Tsinghua University, Beijing 100084, China. ³College of Chemistry and Molecular Engineering, Peking University, Beijing 100871, China. ⁴School of Chemistry and Environment, Beihang University, Beijing 100191, China. Correspondence and requests for materials should be addressed to L.J. (email: jjanglei@iccas.ac.cn).

Environmental protection and economic development have increased the demand for materials that can effectively separate oil–water mixtures^{1–3}. The petroleum industry also requires novel oil–water separation methods to improve oil recovery^{4,5}. In the field of oil–water separation, materials with special wettabilities and micro- and nanostructures have attracted the attention of many researchers; these materials include polymer-coated meshes^{6–8}, hydrogel-coated meshes⁹, polymer networks¹⁰ and surface-modified meshes^{11–14}, although for these methods, phase separation occurs readily in the oil–water mixture. If the mixture is undisturbed for a period of time, it will separate by itself to form a water layer and an oil layer. However, oil–water mixtures from practical applications contain many micron-sized oil droplets, which are not affected by phase separation and cannot be separated through these methods. To date, although there are a few methods capable of separating micron-sized oil droplets^{15–17}, high continuity or high throughput remains difficult to achieve.

The collection of micron-sized water droplets by cacti relies on the directional transport of liquid droplets¹⁸, which is also applied in many applications, including fog harvesting^{19,20}, filtration²¹, condensers²² and microfluidic devices^{23–25}. The micron-sized water droplets can be driven by the conical structure during water deposition¹⁸. Micron-sized oil droplets in water and micron-sized water droplets in air are similar, so we can move the cactus-inspired system underwater. Thus, here we fabricate a novel oleophilic conical needle structure that can successfully separate micron-sized oil droplets from the oil–water mixture and can drive the droplets towards their base; in this way, continuous and effective collection of micron-sized oil droplets from water is achieved.

Results

Collection of micro oil droplets on single Cu-based needles. To test the capability of a single conical needle to collect micron-sized oil droplets, we fabricated a series of conical Cu-based needles from commercial Cu wire with a diameter of 0.5 mm (see details in the Methods section and in Supplementary Fig. S1). The oil–water mixture was sprayed onto the conical needles, which were already immersed in water (Supplementary Fig. S2). The oil–water mixture contained oil droplets smaller than 10 μm (Supplementary Fig. S3); these droplets are difficult to separate using other existing methods with high throughput. Several key frames from videos taken throughout the collection process are shown in Fig. 1a,b. On the smooth Cu-based needle, the collected oil droplets grew through frequent coalescence and slowly moved towards the base of the needle. However, on the rough Cu-based needle, the collected oil droplets could be driven very quickly towards the base of the needle. The difference between these two phenomena is caused by the different roughnesses.

To quantify the capability of a single needle for oil collection, we found a method to measure this capability. The needles were suspended from a micro-electromechanical balance system while they were immersed in water. Before the spraying of the oil–water mixture, the balance system measures the combined forces of gravity and buoyancy. After the spraying of the oil–water mixture, the oil droplets collected under water experience larger forces from buoyancy than from gravity, so the resultant force measured by the balance system will be reduced and the reduction will reflect the amount of collected oil. The weight changes were measured after spraying for 30 s. The weight changes on smooth Cu-based needles were -1.92 ± 0.30 mg, and those on rough Cu-based needles were -4.98 ± 0.26 mg. It was obvious that the rough needles collected oil more efficiently.

Three steps were found during oil collection on the surface of the rough conical needle: deposition, growth and self-driven

motion (Fig. 1b,g). The driving force and the resistance force were the primary forces in the oil collection process. The droplets on the conical structure were subjected to the directional force induced by the difference in the Laplace pressure (curvature gradient)^{20,26}. In most cases, for droplets on a solid surface, contact angle hysteresis resulting from capillary forces would exist^{19,20,27} and oppose the motion of the droplets. Particularly for droplets on the sub-millimetre scale, the hysteresis effect is so predominant that it is usually difficult to move the droplet^{20,28}. In this case, for motion, a larger driving force is needed to overcome the significant hysteresis force; this force can be achieved by integrating multiple gradients or by increasing the singular gradient effect with roughness. Figure 1h shows that the forces on the oil droplet were the vertical component of the force induced by the difference in the Laplace pressure (F_L) and the hysteresis resistance force (F_H). The micron-sized oil droplets in the oil–water mixture deposited on the surface when they came in contact with the conical needles. Thereafter, the oil droplets grew through frequent coalescence. When the F_L acting on the droplets was large enough, the droplets moved upwards quickly ($\sim 2 \text{ mm s}^{-1}$) and left a clean surface, which could start another collection cycle. As a result, the conical needle could continuously collect oil from the oil–water mixture, as shown in Supplementary Movie 1. In addition, Supplementary Movie 2 shows simulations of these steps: deposition, growth and self-driven motion.

Collection of micro oil droplets on single PDMS needles. As it was complicated to make an array of the conical Cu needles, we chose to fabricate conical needles from polydimethylsiloxane (PDMS). PDMS is intrinsically oleophilic and is easy to mould. Figure 2a,b shows the scanning electron microscope (SEM) images of single PDMS needles. The surfaces of these PDMS needles are covered with spaced ridges (Fig. 2d). The widths of the ridges fit a random distribution of around one micron. Smooth and rough single PDMS needles can also be made into arrays (Fig. 2e,f), as shown below in more detail. The weight changes after spraying for 30 s on smooth PDMS were -2.61 ± 0.53 mg, and the changes on rough PDMS were -3.66 ± 0.42 mg. It was obvious that the rough needles could collect oil more efficiently. This result was consistent with the previous experiments on Cu-based needles.

To summarize, the investigations above considered two variables of the collection surface: material and roughness. From the experiments with Cu-based and PDMS needles, it was conjectured that the ability to collect micron-sized oil droplets was not only present in special materials but was widely manifested in ordinary oleophilic materials. Importantly, there was no need to clean the surface of the conical needles for reuse. After one oil droplet was driven upwards, another droplet arose and grew in the same manner. This driving of the micron-sized oil droplets is very useful in oil collection. Once the oil droplets were driven upwards to the base of the conical needle, they formed a large droplet, which was easy to pump out macroscopically (Supplementary Movie 3).

Further applications of PDMS needle arrays. Arrays of conical PDMS needles were applied for further massive oil collection. The ‘throughput’ and ‘efficiency’ are defined here to quantify the collection ability of the needle arrays. The volume of the oil–water mixture that can be treated per second per square centimetre is defined to be the ‘throughput’. The percentage of oil that can be collected from the oil–water mixture is defined to be the ‘efficiency’.

A commercial sewing needle and an xyz-controlled system combined with a method for PDMS replication were used to

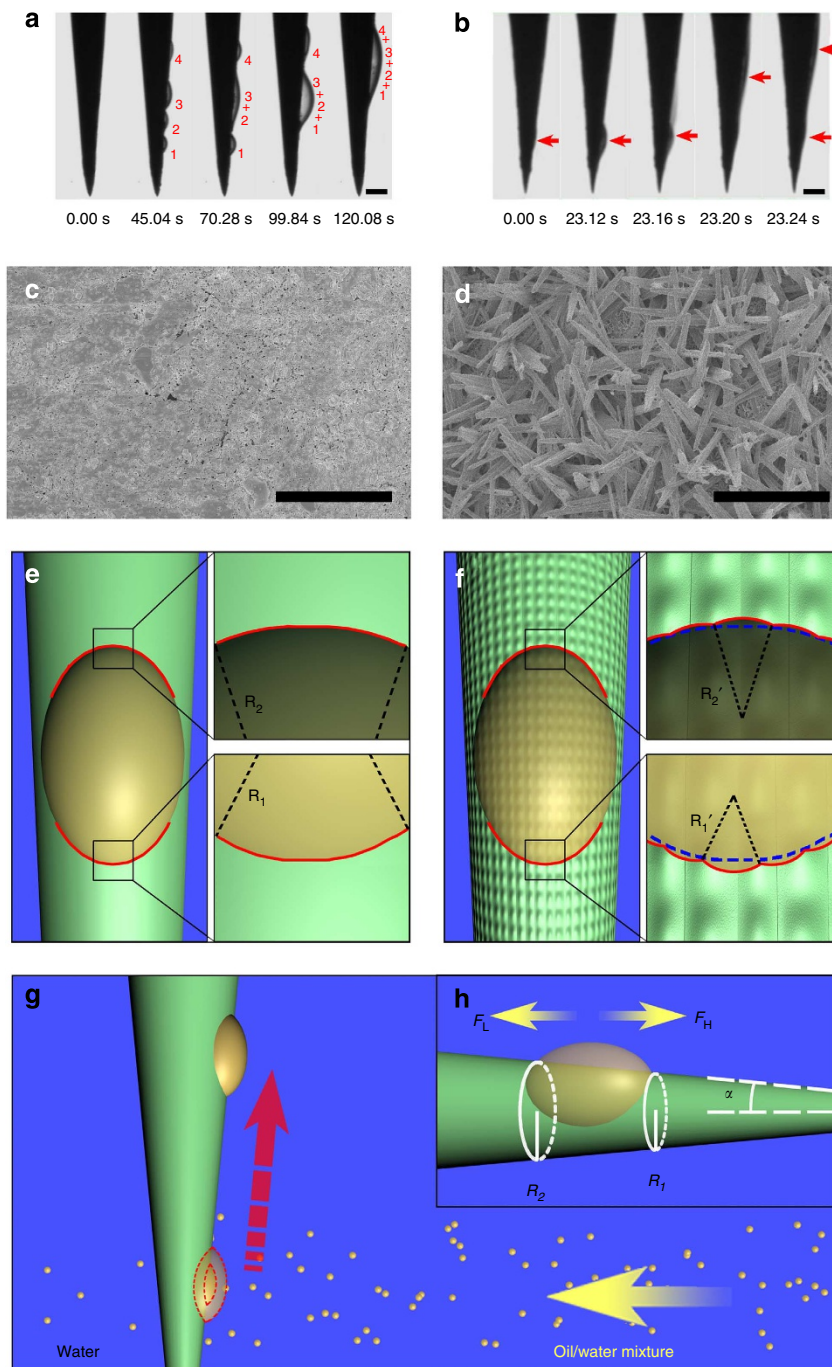


Figure 1 | *In situ* observation and schematic of the oil collection process. (a) *In situ* observation of the oil collection process on a smooth Cu-based needle. The collected oil droplets moved upwards as they combined. (b) *In situ* observation of the oil collection process on a rough Cu-based needle. The collected oil formed a growing droplet (nanolitre to picolitre scale), and when the droplet was driven upwards, a fresh surface was left for another cycle. (c) SEM image of a smooth Cu-based needle. (d) SEM image of a rough Cu-based needle. (e,f) Top views of TCLs and mechanism of roughness enhancement. The smooth needle is on the left side, the rough needle is on the right side and the red lines indicate the TCLs. (g) Schematic of the oil collection process. Micron-sized oil droplets deposit on the needle. The collected oil droplet grows and is then driven upwards. (h) Estimation of forces when a droplet is in the clam-shell shape. F_L is the vertical component of the force induced by the Laplace pressure. F_H is the hysteresis resistance force. Scale bars, (a,b): 30 μm ; (c,d): 5 μm .

fabricate the array. First, needle arrays with square and hexagonal grids of both smooth and rough needles were designed (see SEM images in Supplementary Fig. S4). The roughness of the structure was the same as that for the single PDMS needles described previously. The PDMS replica (with a size of 0.8 cm \times 0.8 cm) was immersed under water at an angle before being sprayed with the

oil–water mixture (Fig. 3a). Similar to the experiments on single conical needles (the oil droplets collected by a single conical needle are driven towards the base and form a larger macroscopic droplet), the collected oil droplets formed a large droplet and converged at the upper edge of the PDMS replica because of the buoyancy force under water (Supplementary Movie 4).

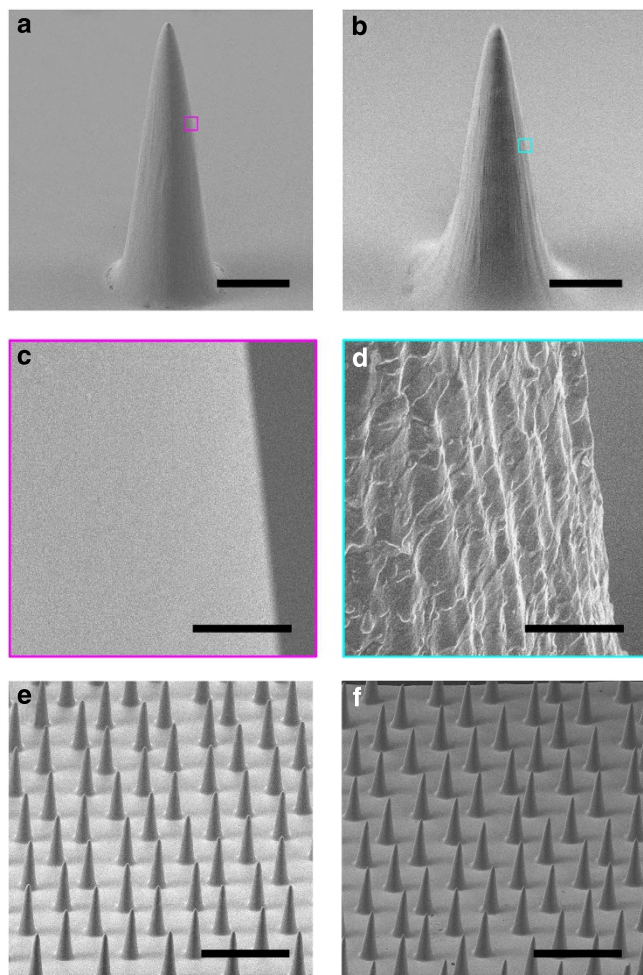


Figure 2 | SEM images of conical PDMS needles and arrays. (a) SEM image of a smooth PDMS needle. (b) SEM image of a rough PDMS needle. (c) Enlarged image of a smooth PDMS needle. (d) Enlarged image of a rough PDMS needle. After spraying the oil-water mixture for 30 s, the needle in (b) showed a larger weight change (-3.66 ± 0.42 mg) than the needle in (a) (-2.61 ± 0.53 mg). (e) SEM image of an array of smooth PDMS needles. (f) SEM image of an array of rough PDMS needles. Scale bars, (a,b): 100 μ m; (c,d): 5 μ m; (e,f): 500 μ m.

To quantify the efficiency of the collection, the oil content in the oil-water mixture was measured before separation (Fig. 3b), and the result was defined to be V_0 . The oil content after the oil-water separation (Fig. 3d) was also measured and was defined to be V_C . The difference between V_0 and V_C can be considered as the volume of oil collected. The collection efficiency could be calculated from the formula: $R(\%) = (1 - (V_C/V_0)) \times 100\%$.

The collection efficiencies for the four types of arrays were measured separately; the smooth square arrays had an efficiency of $\sim 93.7 \pm 2.3\%$, the smooth hexagonal arrays had an efficiency of $\sim 96.2 \pm 1.9\%$, the rough square arrays had an efficiency of $\sim 95.6 \pm 0.8\%$ and the rough hexagonal arrays had an efficiency of $\sim 98.9 \pm 0.4\%$ (Supplementary Fig. S4). It was clear that the arrays with hexagonal grids have higher efficiencies than the arrays with square grids because the needle densities are larger. Rough needle arrays are more efficient because of the roughness enhancement, which is discussed below. Thus, we chose the rough hexagonal array for the following experiments and studied the effects of the separation between needles and the height of the needle arrays.

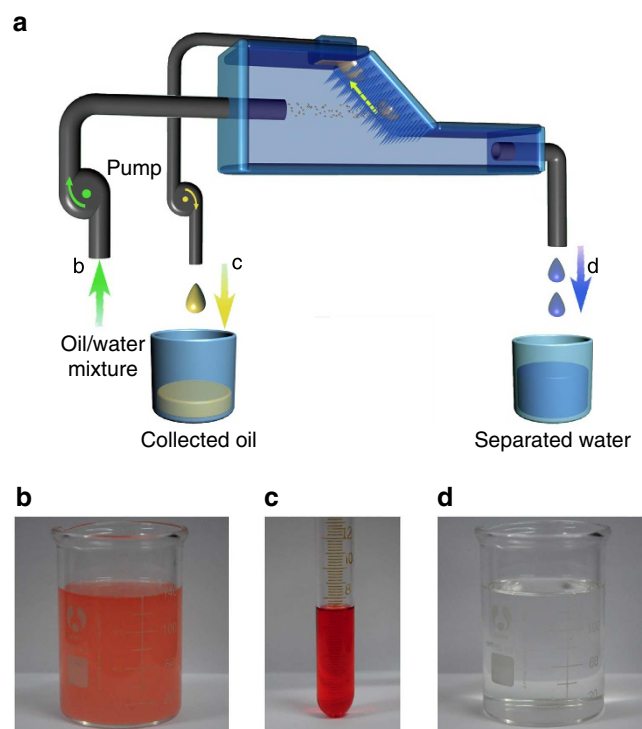


Figure 3 | Oil collection on PDMS needle arrays. (a) Schematic of the collection device. When the oil-water mixture flowed through the needle array, the oil in the mixture was collected by the conical needles, and the pure water flowed towards the other end of the device. (b) Oil-water mixture. (c) Collected oil. (d) Separated water, nearly no visible red oil was present. To facilitate observation, Oil Red O is added to the oil.

A series of rough hexagonal arrays were fabricated with different needle separations and array heights (see SEM images in Supplementary Fig. S5). The needle separation in the arrays was from 500 to 250 μ m (Fig. 4a), and the heights of the conical needles in the array were from 0 to 500 μ m (Fig. 4b). It was obvious that both the needle separation and array height could affect the collection efficiency. Smaller needle separations and greater array heights can provide larger array densities and greater contact areas, and these properties are important for oil collection.

To quantify the throughput for oil collection in the needle array, the parameters of the spray were changed. Needle arrays that were $0.8 \text{ cm} \times 0.8 \text{ cm}$ in size were used. The major parameters that could be changed included the size of the syringe needles (different internal diameters), the flow velocity and the number of needles spraying simultaneously (Supplementary Fig. S6). The effective usage area of the PDMS array was maintained at $\sim 0.125 \text{ cm}^2$. The flow rate was changed from 0.009 ml s^{-1} to 0.141 ml s^{-1} . Accordingly, the throughput could be as much as $1.128 \text{ ml cm}^{-2} \text{ s}^{-1}$. As the parameters changed, the efficiency was relatively invariable and high. Therefore, the throughput can be improved by changing the parameters. The improved throughput could provide potential industrial applications for large area arrays or with pipes instead of syringe needles.

Discussion

According to the sections on the collection of micron-sized oil droplets on single Cu-based needles and single PDMS needles, the ability to collect micron-sized oil droplets existed for both types of needles. The similarity in the results for single Cu-based and

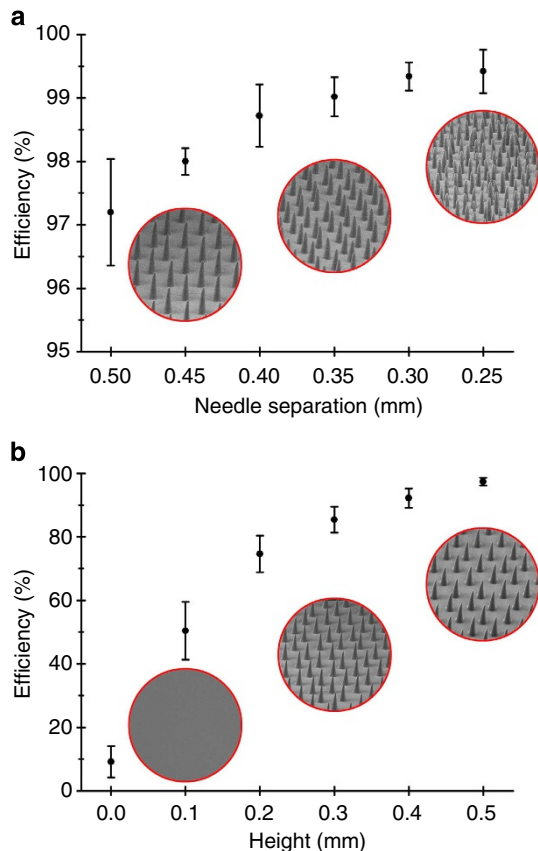


Figure 4 | Efficiencies of oil collection on PDMS needle arrays. (a) Efficiencies of needle arrays with different needle separations. The three inset SEM images are the arrays with needle separations of 0.50, 0.35, and 0.25 mm. A larger needle density provided a higher efficiency. (b) Efficiencies of needle arrays with different heights. The three inset SEM images are the arrays with heights of 0.0, 0.3, and 0.5 mm. Higher needles provided a larger efficiency. Each point represents the average efficiency of seven samples; the error bars indicate the standard deviation.

PDMS needles is reasonable. The ability to deposit oil is based on the intrinsic oleophilicity of these materials under water, and the conical structure induces the directional motion of the collected oil droplets. Therefore, the key qualities for continuous oil collection are oleophilicity and a conical structure. To validate this result, other oleophilic materials were tested in conical structures, including Au-coated needles, polyaniline-coated needles and rubbed polystyrene needles (see Supplementary Fig. S7). These needles can also continuously collect oil from an oil–water mixture.

Based on the further applications of PDMS needle arrays, the collection efficiency of the PDMS needle array could be ~99%. Almost no visible oil (which had been dyed red with Oil Red O) existed in the separated water (Fig. 3d). It was conjectured that many types of micron-sized oil droplets could be collected by this needle array. Accordingly, a variety of oil–water mixtures and organic solvent/water mixtures, including low-viscosity silicone, gasoline, vegetable oil, hexane and petroleum ether, were successfully separated through the same process. Thus, materials with conical structures may find potential applications in environmental protection, chemical engineering and the petroleum industry.

The micron-sized oil droplets on single needles moved slowly on the smooth Cu needles towards the base through coalescence. However, on the rough Cu-based needles, the collected oil

droplets could be driven towards the base very quickly. The difference between these two phenomena arises from the increased oleophilicity caused by the surface roughness when the droplets are in the Wenzel state^{29,30}; thus, the Laplace pressure is different on the conical structured needle (Fig. 1e,f). The convex structure of the rough needles modifies the oil–water–solid three-phase contact line (TCL) of the oil droplet. On the smooth needle, the Laplace pressures at the two opposite sides of the droplet can be represented as follows^{19,20}:

$$P_1 \sim (\gamma_{\text{water}} - \gamma_{\text{oil}}) \frac{1}{R_1}, P_2 \sim (\gamma_{\text{water}} - \gamma_{\text{oil}}) \frac{1}{R_2} \quad (1)$$

where R_1 and R_2 are the local radii of the TCLs at the two opposite sides, γ_{water} is the surface tension of water and γ_{oil} is the surface tension of oil. The Laplace pressure at the two opposite sides of the droplet can be written thus:

$$P'_1 \sim (\gamma_{\text{water}} - \gamma_{\text{oil}}) \frac{1}{R'_1}, P'_2 \sim (\gamma_{\text{water}} - \gamma_{\text{oil}}) \frac{1}{R'_2} \quad (2)$$

where R'_1 and R'_2 are the local radii of the TCLs at the two opposite sides. On the rough needle, the TCLs are divided into several parts by the rough structures, and this division gives rise to the decreased local radius of the TCLs and the enlarged local curvatures. Therefore, the difference in the Laplace pressures ($\Delta P'$) is enlarged by the roughness:

$$\Delta P' = P'_1 - P'_2 > P_1 - P_2 = \Delta P \quad (3)$$

The enlarged difference in the Laplace pressures provides a larger driving force on the rough surface, or equivalently, the rough needle leads to smaller initial radii for the driven droplets. Thus, the rough needle can provide a larger fresh surface for oil collection. Because the fresh rough surface can collect oil droplets more efficiently than the smooth surface, the rough needle can collect oil faster.

As is known, in air, water droplets can be driven by shape gradients^{18,19,26}. In our research, this effect also exists for oil droplets under water. Figure 1h shows that the forces on the oil droplet were the vertical component of the Laplace Force (F_L) and the hysteresis resistance force (F_H). F_L and F_H can be represented as follows:

$$F_L \sim (\gamma_{\text{water}} - \gamma_{\text{oil}}) \left(\frac{1}{R_1} - \frac{1}{R_2} \right) \frac{\sin 2\alpha}{R_2 - R_1} V \quad (4)$$

$$F_H \sim \pi R_0 (\gamma_{\text{water}} - \gamma_{\text{oil}}) (\cos \theta_r - \cos \theta_a) \quad (5)$$

where α is the semi-apex angle of the conical needle, V is the volume of the oil droplet, R_0 is the radius of the oil droplet, θ_r and θ_a are the receding and advancing contact angles, and R_1 and R_2 are the local radii at the two opposite sides of the droplet (see details in Supplementary Note). The maximum of F_H is constant when R_0 is invariable, and when the oil droplet grows, V and F_L increase. Thus, if the oil droplet is not large enough, F_L is smaller than the maximum of F_H , and the droplet cannot move; as the droplet grows, once F_L becomes larger than the maximum of F_H , the oil droplet is driven towards the base of the needle. For the droplet 1 + 2 + 3 + 4 in Fig. 1a, the maximum of F_H is $\sim 1.5 \times 10^{-6}$ N for $R_1 \sim 20 \mu\text{m}$, $R_2 \sim 30 \mu\text{m}$ and $V \sim 60 \text{ pL}$; F_L is $\sim 1.1 \times 10^{-6}$ N, and hence the oil droplet does not move by itself. For the droplet in Fig. 1b, the maximum of F_H is $\sim 7.7 \times 10^{-7}$ N for $R_1 \sim 10 \mu\text{m}$, $R_2 \sim 20 \mu\text{m}$ and $V \sim 6 \text{ pL}$; F_L is $\sim 6.9 \times 10^{-7}$ N, but the roughness enhanced F_L by decreasing R_1 and R_2 and making F_L larger than the maximum of F_H ; thus, the oil droplet could be driven upwards. In addition, the gravity and buoyancy forces can be neglected in principle because F_L and F_H are 10^{-7} – 10^{-6} N and because the gravity force and buoyancy force are 10^{-12} – 10^{-11} N.

Rough needles can collect oil droplets more efficiently than smooth needles, and we found a method to quantify the roughness enhancement. A series of Cu-based needles with different roughnesses were fabricated (Supplementary Fig. S8). The needle surfaces were covered with nanorods with different lengths and diameters. The lengths of the nanorods ranged from 0 to $6.7 \pm 0.5 \mu\text{m}$, and the diameters were from 0 to $472 \pm 141 \text{ nm}$. The weight changes after spraying for 30 s were also measured and were from -1.92 ± 0.30 to $-4.95 \pm 0.22 \text{ mg}$ (Supplementary Fig. S9). These results were homologous with the roughness of the needles.

The conical-apex angle also affects the collection efficiency. After spraying for 30 s, the weight changes on single conical needles with different conical-apex angles were measured; the changes were $-4.40 \pm 0.18 \text{ mg}$ at 10° and $-5.43 \pm 0.22 \text{ mg}$ at 15° and changed linearly (Supplementary Fig. S10). The needles with larger conical-apex angles can collect oil faster. The faster collection occurs because of the larger conical-apex angle: if the conical-apex angle is larger, the F_L in equation (4) equals F_H at smaller volumes. Equivalently, larger conical-apex angles lead to smaller initial radii for the driven droplets. Thus, the needles with larger conical-apex angles can provide more fresh surfaces for oil collection. Therefore, the needles with larger conical-apex angles can collect oil droplets faster.

In conclusion, a novel oleophilic conical needle material was successfully fabricated and demonstrated exciting oil collection properties in oil–water–solid three-phase systems. The conical needle can collect micron-sized oil droplets from the oil–water mixture and can achieve directionally controlled transport of micron-sized oil droplets. A conical needle array can continuously collect oil from an oil–water mixture with high efficiency and high throughput. Furthermore, other oleophilic materials with conical structures are expected to be usable for continuous oil collection. The introduction of stimuli-responsive polymers will also aid in the design of smart materials and in oil–water separation from oil-in-water emulsions.

Methods

Fabrication of single conical needles. In the process of fabricating single Cu-based needles, a simple electroetching process was used. Commercial Cu wire with a diameter of 0.5 mm was used as the raw material. Initially, burnished copper wires were immersed in an aqueous solution of 0.1 M CuSO_4 at room temperature. Then, the wires were electroetched at a voltage of 10 V, and the Cu wires were raised and lowered at a velocity of 0.1 mm s^{-1} for hundreds of cycles to form conical needles. The relatively smooth Cu-based needles were fabricated by immersing these as-prepared conical Cu needles in an ethanol solution of 1-hexadecanethiol (10 mM) for 15 min, then washing the wires with ethanol and drying the wires in air. The relatively rough Cu-based needles were fabricated by roughening the as-prepared conical Cu needles by immersing the wires in an aqueous solution of 1.0 M NaOH and 0.05 M $\text{Na}_2\text{S}_2\text{O}_8$ at room temperature for $15 \text{ min}^{11,14,31}$. The reaction time for this stage could be changed to fabricate needles with different roughnesses. After being washed with water and then dried in air, the needles were further immersed in a solution of 1-hexadecanethiol in ethanol (10 mM) for 15 min; then, the needles were washed with ethanol and were dried in air (Supplementary Fig. S1).

In the process of fabricating single PDMS needles, commercial sewing needles were used to prick the surfaces of slices of polyethylene (PE) (with thicknesses of 1 mm), and PE slices with conical holes were obtained. Then, using a mature and widely applied technology^{32,33}, PDMS was applied to replicate the conical holes, and PDMS replicas of smooth conical needles were formed. Moreover, if we rubbed the commercial sewing needles with sandpaper, the surfaces of the final PDMS replica needles exhibited a rough morphology.

Experiments on single conical needles. The conical needles were immersed in deionized water. Numerous micron-sized oil droplets were generated by stirring and ultrasonically treating the mixture of low-viscosity silicone (PMX200-5CS, Dow Corning) and deionized water (5:95, silicone:water, by weight). Supplementary Fig. S3 shows a microscope image of the micron-sized oil droplets with diameters ranging from 1 to $4 \mu\text{m}$. The mixture was sprayed through the syringe needles onto our conical needles (Supplementary Fig. S2). The entire process was recorded by the optical microscopy components of the OCA40 system.

The weight changes were measured under the same conditions with the exception that the conical needles were suspended from the micro-electromechanical balance system of the DCAT 11.

Fabrication and experiments on conical needle arrays. The fabrication process for the needle arrays is shown in Supplementary Fig. S11. Commercial sewing needles with conical-apex angles similar to that of the single conical needles were attached to a jet dispensing system. PE slices were pricked to form the hole array. PDMS (Sylgard 184, Dow Corning) was applied to replicate the surface of the hole array. The PDMS replicas exhibit the morphology of an array of conical needles. The oil–water mixture was sprayed onto the conical needle arrays (Fig. 3a); to facilitate observation, a small quantity of Oil Red O was added to the mixture.

Instruments and characterization. SEM images of the samples were obtained with a field-emission scanning electron microscope (JSM-6700 F, Japan). Experiments on single conical needles were performed on an OCA40 machine (Data-Physics, Germany). Micrographs were obtained with a Leica DM4000M microscope (Germany). The weight changes during the collection of oil on single conical needles were measured with a high-sensitivity micro-electromechanical balance system (Data-Physics DCAT 11, Germany). The conical hole arrays were fabricated with a jet dispensing system (Nordson EFD-PicoDot, USA).

References

- Shannon, M. A. *et al.* Science and technology for water purification in the coming decades. *Nature* **452**, 301–310 (2008).
- Montgomery, M. A. & Elimelech, M. Water and sanitation in developing countries: including health in the equation. *Environ. Sci. Technol.* **41**, 17–24 (2007).
- Nordvik, A. B., Simmons, J. L., Bitting, K. R., Lewis, A. & Strom-Kristiansen, T. Oil and water separation in marine oil spill clean-up operations. *Spill Sci. Technol. Bull.* **3**, 107–122 (1996).
- Banat, I. M. Biosurfactants production and possible uses in microbial enhanced oil recovery and oil pollution remediation: a review. *Bioresour. Technol.* **51**, 1–12 (1995).
- Soudmand-Asli, A., Ayatollahi, S. S., Mohabatkar, H., Zareie, M. & Shariatpanahi, F. The *in situ* microbial enhanced oil recovery in fractured porous media. *J. Pet. Sci. Eng.* **58**, 161–172 (2007).
- Feng, L. *et al.* A super-hydrophobic and super-oleophilic coating mesh film for the separation of oil and water. *Angew. Chem. Int. Ed.* **43**, 2012–2014 (2004).
- Yuan, J. K. *et al.* Superwetting nanowire membranes for selective absorption. *Nat. Nanotech.* **3**, 332–336 (2008).
- Choi, W. *et al.* Fabrics with tunable oleophobicity. *Adv. Mater.* **21**, 2190–2195 (2009).
- Xue, Z. X. *et al.* A novel superhydrophilic and underwater superoleophobic hydrogel-coated mesh for oil/water separation. *Adv. Mater.* **23**, 4270–4273 (2011).
- Tu, C. W., Tsai, C. H., Wang, C. F., Kuo, S. W. & Chang, F. C. Fabrication of superhydrophobic and superoleophilic polystyrene surfaces by a facile one-step method. *Macromol. Rapid Commun.* **28**, 2262–2266 (2007).
- Wang, C. X. *et al.* Facile approach in fabricating superhydrophobic and superoleophilic surface for water and oil mixture separation. *ACS Appl. Mater. Interf.* **1**, 2613–2617 (2009).
- Wang, Q. J., Cui, Z., Xiao, Y. & Chen, Q. M. Stable highly hydrophobic and oleophilic meshes for oil-water separation. *Appl. Surf. Sci.* **253**, 9054–9060 (2007).
- Cheng, M. J. *et al.* A functionally integrated device for effective and facile oil spill cleanup. *Langmuir* **27**, 7371–7375 (2011).
- Pan, Q. M., Wang, M. & Wang, H. B. Separating small amount of water and hydrophobic solvents by novel superhydrophobic copper meshes. *Appl. Surf. Sci.* **254**, 6002–6006 (2008).
- Kota, A. K., Kwon, G., Choi, W., Mabry, J. M. & Tuteja, A. Hydro-responsive membranes for effective oil-water separation. *Nat. Commun.* **3**, 1025 (2012).
- Kwon, G. *et al.* On-demand separation of oil-water mixtures. *Adv. Mater.* **24**, 3666–3671 (2012).
- Field, R. W. Separation by reconfiguration. *Nature* **489**, 41–42 (2012).
- Ju, J. *et al.* A multi-structural and multi-functional integrated fog collection system in cactus. *Nat. Commun.* **3**, 1247 (2012).
- Zheng, Y. M. *et al.* Directional water collection on wetted spider silk. *Nature* **463**, 640–643 (2010).
- Bai, H. *et al.* Direction controlled driving of tiny water drops on bioinspired artificial spider silks. *Adv. Mater.* **22**, 5521–5525 (2010).
- Agranovski, I. E. & Braddock, R. D. Filtration of liquid aerosols on wetttable fibrous filters. *AIChE J.* **44**, 2775–2783 (1998).
- Daniel, S., Chaudhury, M. K. & Chen, J. C. Fast drop movements resulting from the phase change on a gradient surface. *Science* **291**, 633–636 (2001).
- Grunze, M. Driven liquids. *Science* **283**, 41–42 (1999).

24. Gau, H., Herminghaus, S., Lenz, P. & Lipowsky, R. Liquid morphologies on structured surfaces: from microchannels to microchips. *Science* **283**, 46–49 (1999).
25. Lai, Y. H., Yang, J. T. & Shieh, D. B. A microchip fabricated with a vapor-diffusion self-assembled-monolayer method to transport droplets across superhydrophobic to hydrophilic surfaces. *Lab. Chip.* **10**, 499–504 (2010).
26. Lorenceau, E. & Quéré, D. Drops on a conical wire. *J. Fluid Mech.* **510**, 29–45 (2004).
27. Marmur, A. Contact angle hysteresis on heterogeneous smooth surfaces. *J. Colloid Interface Sci.* **168**, 40–46 (1994).
28. Moumen, N., Subramanian, R. S. & McLaughlin, J. B. Experiments on the motion of drops on a horizontal solid surface due to a wettability gradient. *Langmuir* **22**, 2682–2690 (2006).
29. Tuteja, A. *et al.* Designing superoleophobic surfaces. *Science* **318**, 1618–1622 (2007).
30. Wenzel, R. N. Resistance of solid surfaces to wetting by water. *Ind. Eng. Chem.* **28**, 988–994 (1936).
31. Hou, H. W., Xie, Y. & Li, Q. Large-scale synthesis of single-crystalline quasi-aligned submicrometer CuO ribbons. *Cryst. Growth Des.* **5**, 201–205 (2005).
32. Xia, Y. N. & Whitesides, G. M. Soft lithography. *Annu. Rev. Mater. Sci.* **28**, 153–184 (1998).
33. He, B., Patankar, N. A. & Lee, J. Multiple equilibrium droplet shapes and design criterion for rough hydrophobic surfaces. *Langmuir* **19**, 4999–5003 (2003).

Acknowledgements

We are grateful for the financial support from the National Research Fund for Fundamental Key Projects (2013CB933000), the National Natural Science Foundation (51173099, 21121001, 91127057) and the Key Research Program of the Chinese Academy of Sciences (KJZD-EW-M01).

Author contributions

K.L., J.M. and L.F. performed the experiments. K.L., L.F., and L.J. collected and analysed the data, and proposed the mechanism of the oil collection on conical structured needles. K.L., J.J., Z.X. and L.F. wrote the text. S.G. and L.J. conceived the project. L.J. designed the experiments.

Additional information

Supplementary Information accompanies this paper at <http://www.nature.com/naturecommunications>

Competing financial interests: The authors declare no competing financial interests.

Reprints and permission information is available online at <http://npg.nature.com/reprintsandpermissions/>

How to cite this article: Li, K. *et al.* Structured cone arrays for continuous and effective collection of micron-sized oil droplets from water. *Nat. Commun.* **4**:2276 doi: 10.1038/ncomms3276 (2013).