



## Correction to: p14<sup>ARF</sup> inhibits the growth of lung adenocarcinoma cells harbouring an EGFR L858R mutation by activating a STAT3-dependent pro-apoptotic signalling pathway

P. Ozenne · D. Dayde · E. Brambilla · B. Eymin · S. Gazzeri

Published online: 4 May 2021

© The Author(s), under exclusive licence to Springer Nature Limited 2021

Correction to: *Oncogene* (2013) 32:1050–1058

<https://doi.org/10.1038/onc.2012.107>

Following publication of this article, the authors became aware of errors in several figures.

When preparing the combined Fig. 1a, two tubulin bands were inadvertently duplicated. Initially, the Calu3 and A549 cell lines were not loaded on the same blots than other cell lines. Original tubulin immunoblots were retrieved. A corrected version of Fig. 1a is provided in which the correct tubulin data are presented and indicated by a splice line to highlight non-continuous blots.

In Figs. 1d and 2c, the same actin immunoblots were inadvertently used to illustrate loading controls of sip14ARF experiments.

The original actin immunoblot of Fig. 1d was found and replaced in the corrected figure.

The original actin control blot of Fig. 2c could not be retrieved but data from additional experiments are shown that confirm the published results regarding the negative impact of p14ARF knock-down on STAT3 phosphorylation.

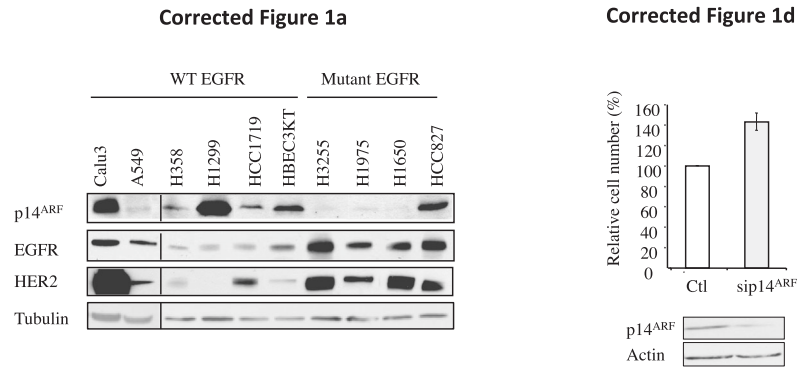
Likewise, questions raised on tubulin immunoblots in Figs. 3a and 4a are addressed by showing additional experiments that confirm (1) the induction of apoptosis following PTP-RT neutralization that correlates with P-STAT3 activation in H3255 cells (Fig. 3a, other original data) and (2) the upregulation of bcl-2 expression following STAT3 neutralization in H3255 cells (Fig. 4a, other original data).

In Fig. 5d, the authors point the fact that both EGF treatments (30 min and 24 h) were part of the same experiment and loaded on the same immunoblots (except for p-EGFR) with the same control data point (NT). In the published paper, the data were presented into two distinct panels to illustrate effect of EGF on EGFR activation (EGF 30 min) and on p14ARF expression (EGF 24 h). Splice lines have been added in the corrected Fig. 5d to highlight non-continuous blots.

All corrected figures and additional data are included below. The results and scientific conclusions of this paper have not been affected by these modifications. The authors apologize to readers for any inconvenience caused.



Fig. 1



Other original data of Fig2c

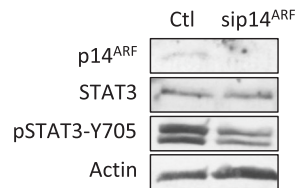


Fig. 2

Other original data of Fig4a

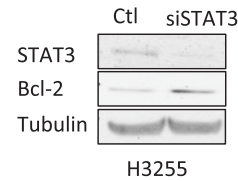


Fig. 4

Other original data of Fig3a

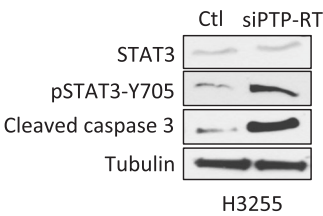


Fig. 3

Corrected Figure 5d

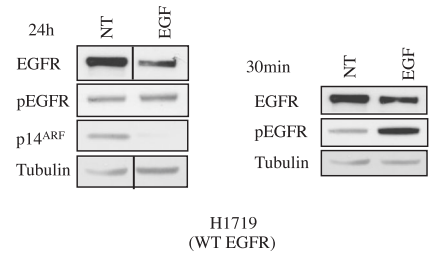


Fig. 5