

CORRECTION OPEN



Correction: Cold atmospheric plasma induces GSDME-dependent pyroptotic signaling pathway via ROS generation in tumor cells

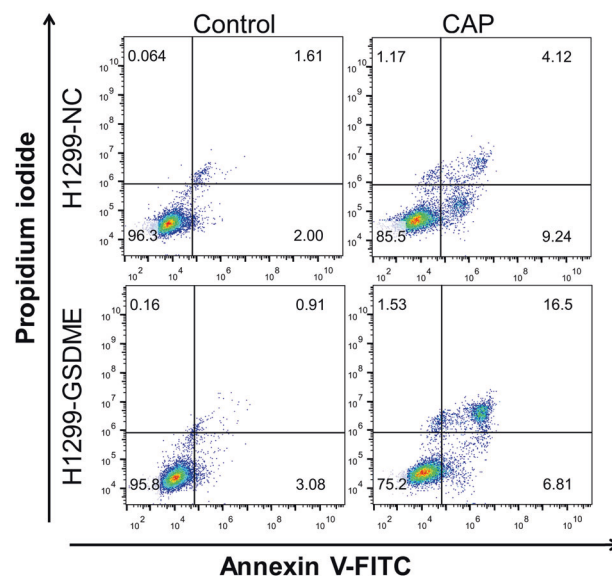
Xiaorui Yang, Guodong Chen, Kwan Ngok Yu, Miaomiao Yang, Shengjie Peng, Jie Ma, Feng Qin, Wei Cao, Shujun Cui, Lili Nie and Wei Han

© The Author(s) 2022

Cell Death and Disease (2022)13:690; <https://doi.org/10.1038/s41419-022-05143-7>

Correction to: *Cell Death and Disease* <https://doi.org/10.1038/s41419-020-2459-3>, published online 27 April 2020

The original version of this article unfortunately contained an error. During the result collation, the incorrect graphs were used in Figure 3H since a large number of graphs were processed at the same time. The authors apologize for the error. The corrected figure can be found below.





Open Access This article is licensed under a Creative Commons Attribution 4.0 International License, which permits use, sharing, adaptation, distribution and reproduction in any medium or format, as long as you give appropriate credit to the original author(s) and the source, provide a link to the Creative Commons license, and indicate if changes were made. The images or other third party material in this article are included in the article's Creative Commons license, unless indicated otherwise in a credit line to the material. If material is not included in the article's Creative Commons license and your intended use is not permitted by statutory regulation or exceeds the permitted use, you will need to obtain permission directly from the copyright holder. To view a copy of this license, visit <http://creativecommons.org/licenses/by/4.0/>.

© The Author(s) 2022