

Author Correction: Roles of sumoylation of a reptin chromatin-remodeling complex in cancer metastasis

Jung Hwa Kim, Hee June Choi, Bogyou Kim, Mi Hyang Kim, Ji Min Lee, Ik Soo Kim, Moon Hee Lee, Soo Joon Choi, Keun Il Kim, Su-Il Kim, Chin Ha Chung and Sung Hee Baek

Correction to: *Nature Cell Biology* <https://doi.org/10.1038/ncb1415>, published online 14 May, 2006.

In the version of this Article originally published, there were several mistakes in Fig 4d. First, in the 'none' group, as shown by the raw data (UVP000641), lanes 9 and 10 were duplicated and used for both 'anti-Flag' and 'anti-Tip60', and lanes 11 and 12 are the correct data for 'anti-Tip60'. In addition, lanes 2 and 3 were accidentally used as 'input', and lanes 7 and 8 are the correct data. Second, in the 'FLAG-SUMO-reptin^{K456R}' group, as shown by the raw data (UVP000691), lanes 8 and 9 were mistakenly used for both 'anti-Ac-H3/4' and 'anti-pol II', for which the correct data should be lanes 7–8 and 9–10, respectively. The experiment was repeated three times with similar results. The source data for Fig. 4d have been deposited to Figshare (<https://figshare.com/s/1d713ae47261fed15c50>). The errors have been corrected.

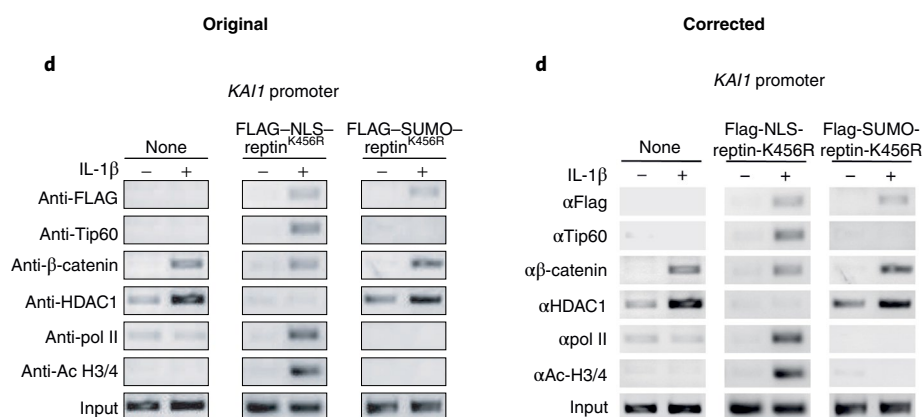


Fig. 1 | Original and corrected.

Published online: 16 June 2021

<https://doi.org/10.1038/s41556-021-00715-9>

© The Author(s), under exclusive licence to Springer Nature Limited 2021