



OPEN **Author Correction:** Time–outcome relationship in acute large-vessel occlusion exists across all ages: subanalysis of RESCUE-Japan Registry 2

Published online: 08 September 2021

Kenichi Todo, Shinichi Yoshimura, Kazutaka Uchida, Hiroshi Yamagami, Nobuyuki Sakai, Haruhiko Kishima, Hideki Mochizuki, Masayuki Ezura, Yasushi Okada, Kazuo Kitagawa, Kazumi Kimura, Makoto Sasaki, Norio Tanahashi, Kazunori Toyoda, Eisuke Furui, Yuji Matsumaru, Kazuo Minematsu, Takaya Kitano, Shuhei Okazaki, Tsutomu Sasaki, Manabu Sakaguchi, Masatoshi Takagaki, Takeo Nishida, Hajime Nakamura, Takeshi Morimoto & RESCUE-Japan Registry 2 Investigators

Correction to: *Scientific Reports* <https://doi.org/10.1038/s41598-021-92100-7>, published online 17 June 2021

The original version of this Article contained errors in Figure 3, where the x-axis label for the graph showing “Patients (%) with a good outcome” was obstructed by an image element.

The original Figure 3 and accompanying legend appear below.

The original Article has been corrected.

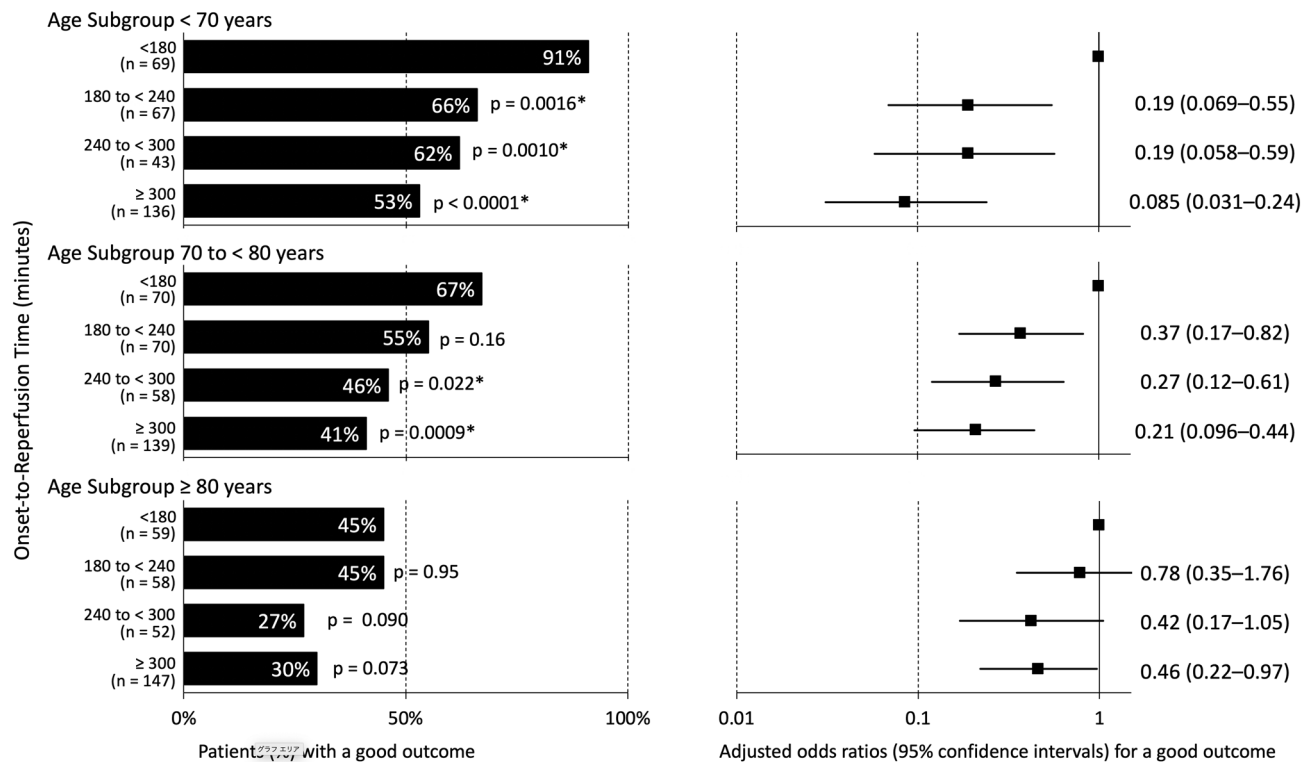


Figure 3. Proportions of a good outcome and adjusted odds ratios for a good outcome according to onset-to-reperfusion time (ORT) categories in each age subgroup. The proportion of a good outcome (defined as mRS score ≤ 2) was lower in the delayed ORT categories than in those with ORT < 180 min in each age subgroup, although the association was marginal in patients aged ≥ 80 years.



Open Access This article is licensed under a Creative Commons Attribution 4.0 International License, which permits use, sharing, adaptation, distribution and reproduction in any medium or format, as long as you give appropriate credit to the original author(s) and the source, provide a link to the Creative Commons licence, and indicate if changes were made. The images or other third party material in this article are included in the article's Creative Commons licence, unless indicated otherwise in a credit line to the material. If material is not included in the article's Creative Commons licence and your intended use is not permitted by statutory regulation or exceeds the permitted use, you will need to obtain permission directly from the copyright holder. To view a copy of this licence, visit <http://creativecommons.org/licenses/by/4.0/>.

© The Author(s) 2021