



OPEN Author Correction: Crosstalk between SDF-1/CXCR4 and SDF-1/CXCR7 in cardiac stem cell migration

Dong Chen, Yanli Xia, Ke Zuo, Ying Wang, Shiyong Zhang, Dong Kuang, Yaqi Duan, Xia Zhao & Guoping Wang

Correction to: *Scientific Reports* <https://doi.org/10.1038/srep16813>, published online 18 November 2015

This Article contains errors.

The images for the medium only and SDF-1 only groups are identical between Fig. 2C, D as the images in these figures were produced from the same experiment. This is not clearly stated in the article. For clarity, this figure is now corrected and the experiment is represented by a single panel; the legend of this figure is also revised to reflect this change. The corrected Fig. 2 is included below.

Additionally, in the Methods section, ‘Transwell migration assay’

"A chemotactic index (CI) was calculated to express stimulated migration: CI = stimulated migration (number of CSCs per HPF)/random migration (number of CSCs per HPF)."

should read:

"A chemotactic index (CI) was calculated to express stimulated migration:

$$CI = \frac{\text{average number of migrated CSCs per HPF of experimental group or internal control}}{\text{average number of migrated CSCs per HPF of external control group}} \times 100"$$

These changes do not affect the conclusions of the Article.

Published online: 11 February 2022

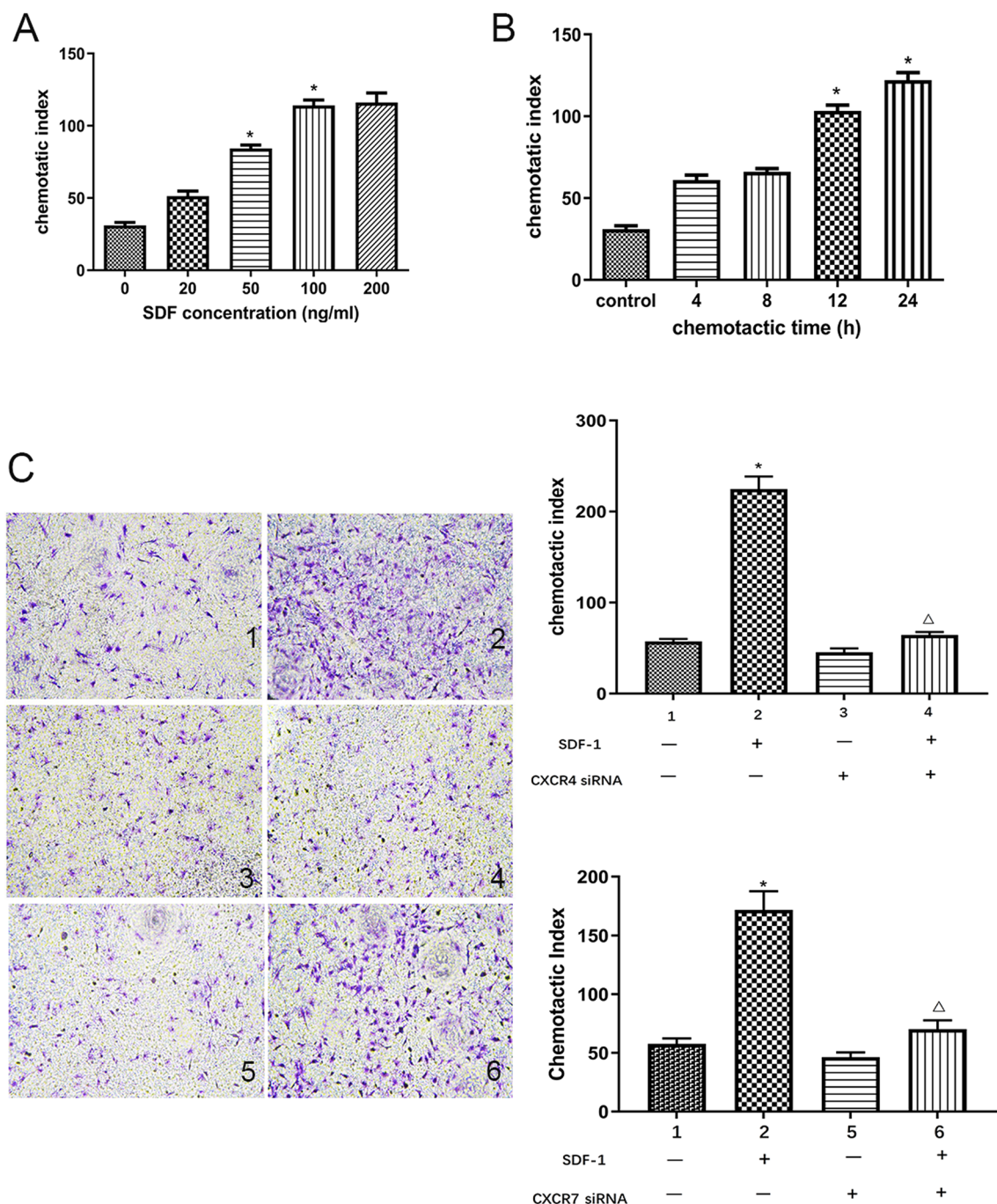


Figure 2. Effects of SDF-1, CXCR4 and CXCR7 on CSCs migration in vitro. **(A)** CSCs migration induced by different concentration of SDF-1 for 12 h was detected with transwell migration assay. **(B)** CSCs migration induced by 100 ng/mL SDF-1 for different time was detected with transwell migration assay. **(C)** Representative images of migrated CSCs induced by 100 ng/mL SDF-1 with or without CXCR4 siRNA or CXCR7 siRNA by transwell migration assay. 1: Medium alone group; 2: 100 ng/mL SDF-1 group; 3: CXCR4 siRNA group; 4: SDF-1 + CXCR4 siRNA group; 5: CXCR7 siRNA group; 6: SDF-1 + CXCR7 siRNA group. Original magnification, $\times 100$. Results were depicted as means \pm SEM. * $P < 0.05$ versus control, $\Delta P < 0.05$ versus SDF-1 group.



Open Access This article is licensed under a Creative Commons Attribution 4.0 International License, which permits use, sharing, adaptation, distribution and reproduction in any medium or format, as long as you give appropriate credit to the original author(s) and the source, provide a link to the Creative Commons licence, and indicate if changes were made. The images or other third party material in this article are included in the article's Creative Commons licence, unless indicated otherwise in a credit line to the material. If material is not included in the article's Creative Commons licence and your intended use is not permitted by statutory regulation or exceeds the permitted use, you will need to obtain permission directly from the copyright holder. To view a copy of this licence, visit <http://creativecommons.org/licenses/by/4.0/>.

© The Author(s) 2022