







## CORRECTION



# Correction to: Brf1 loss and not overexpression disrupts tissues homeostasis in the intestine, liver and pancreas

Dritan Liko, Louise Mitchell, Kirsteen J. Campbell , Rachel A. Ridgway, Carolyn Jones, Kate Dudek, Ayala King, Sheila Bryson, David Stevenson, Karen Blyth , Douglas Strathdee , Jennifer P. Morton, Thomas G. Bird , John R. P. Knight , Anne E. Willis and Owen J. Sansom 

© The Author(s), under exclusive licence to ADMC Associazione Differenziamento e Morte Cellulare 2024

*Cell Death & Differentiation* (2024) 31:1235–1237; <https://doi.org/10.1038/s41418-024-01344-z>

Correction to: *Cell Death & Differentiation* <https://doi.org/10.1038/s41418-019-0316-7>, published online 11 March 2019

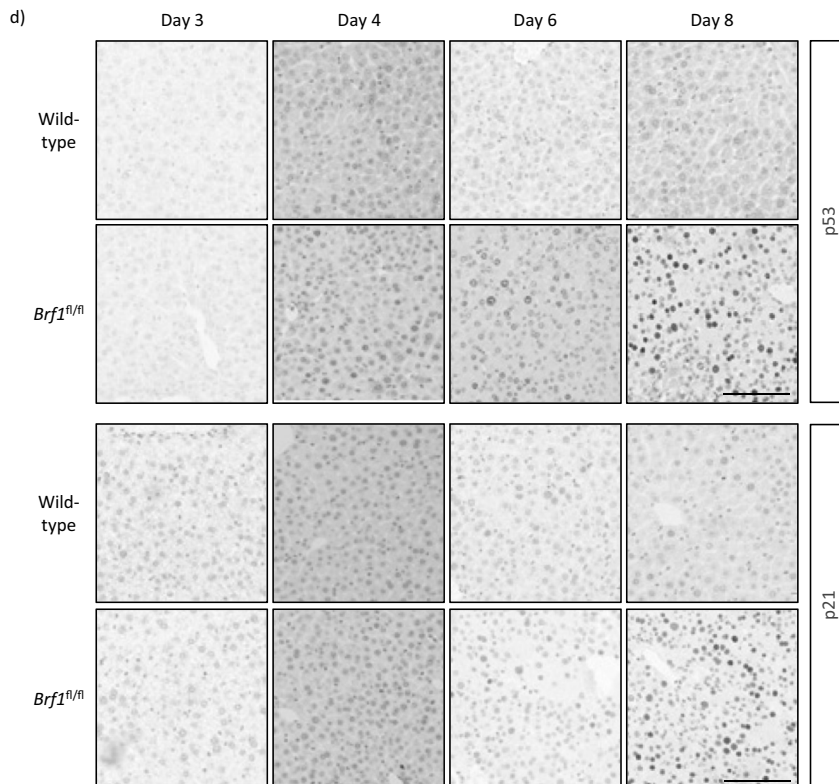
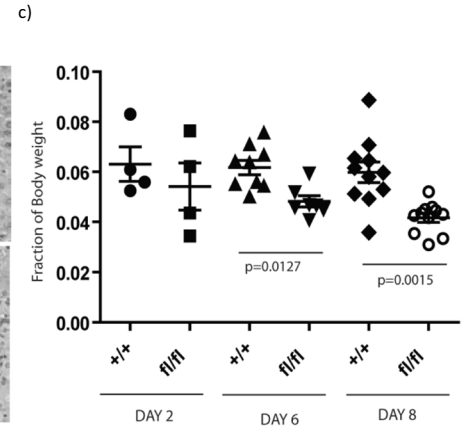
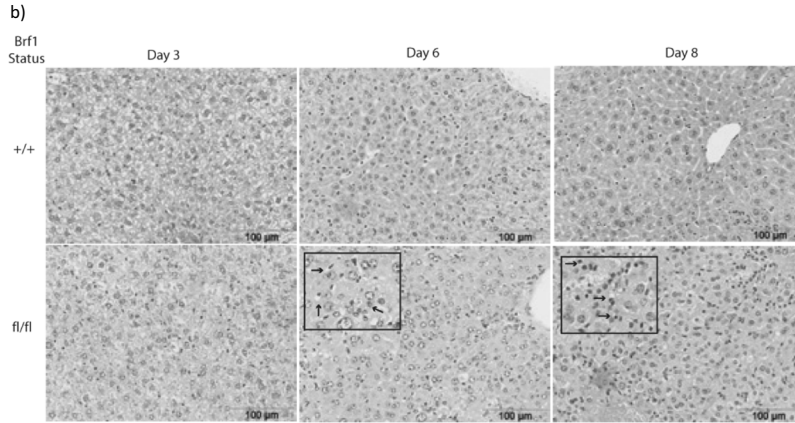
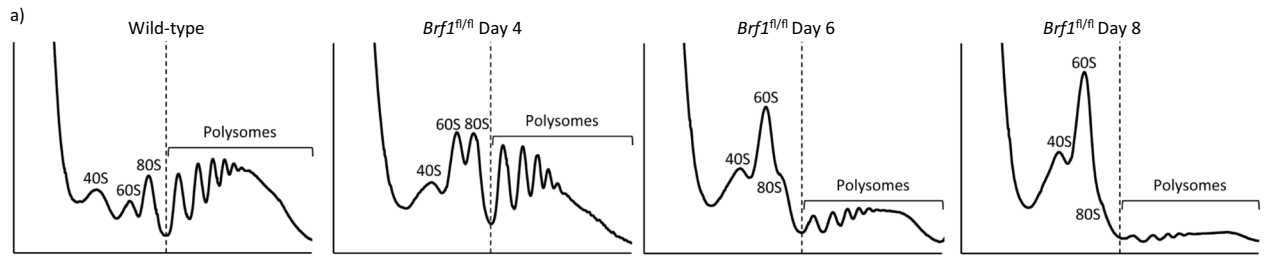
We were notified of a post on the website “Pubpeer” relating to this article on the 21/04/2024. This post highlighted duplicate images found in Fig. 3D of the manuscript.

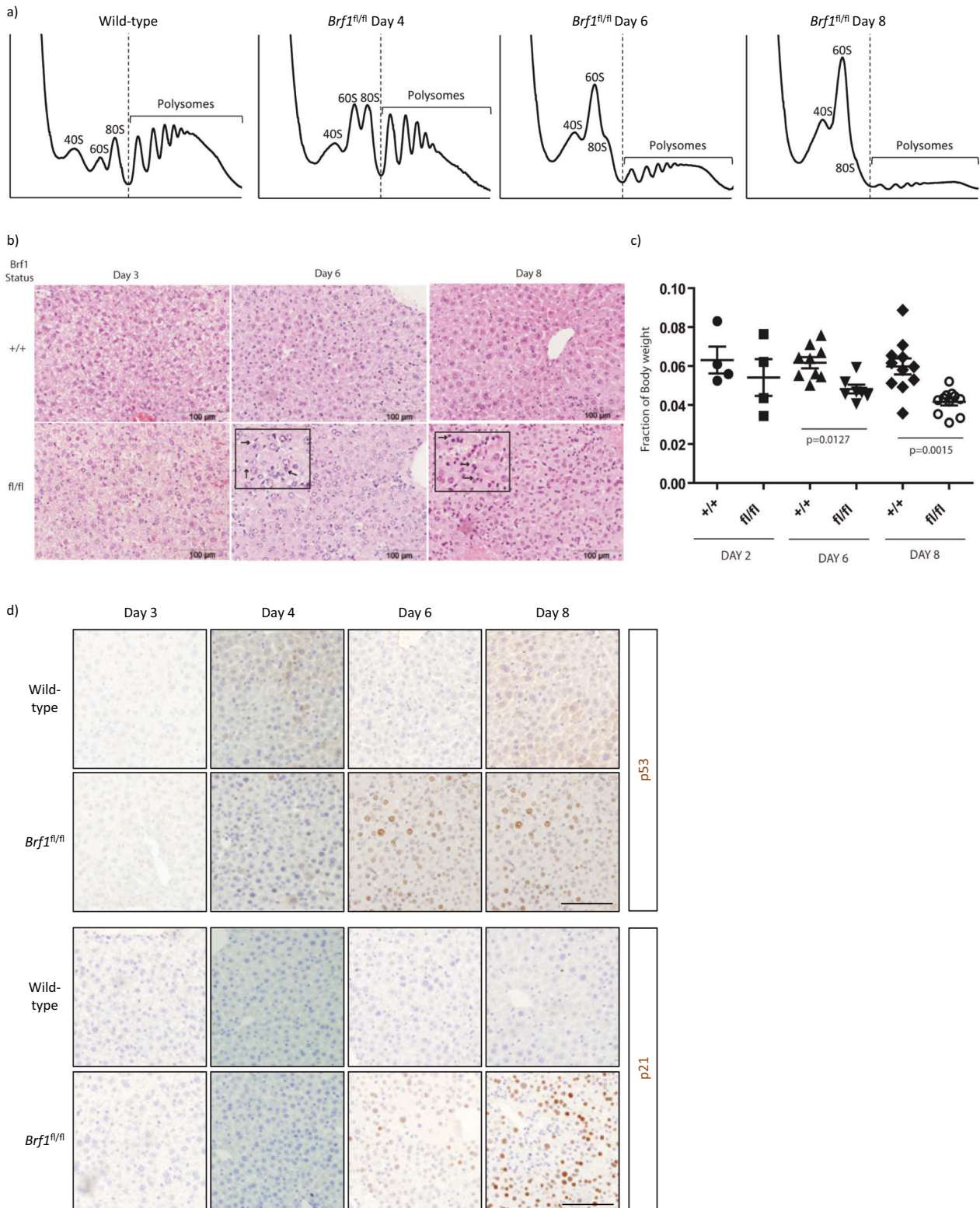
Upon investigation, we found that a single image had been accidentally duplicated during the revision process, with the

correct, unique image found in the originally reviewed manuscript.

We have prepared a corrected Fig. 3D, containing the original appropriate image. This correction does not affect any result described in the figures and does not alter the message of the manuscript in any way.

Fig. 3: Brf1 is essential in adult mouse liver function





The original article has been corrected.