

## CORRECTION OPEN



# Correction: The Activation of G Protein-Coupled Receptor 30 (GPR30) Inhibits Proliferation of Estrogen Receptor Negative Breast Cancer Cells in vitro and in vivo

W. Wei, Z-J Chen, K-S Zhang, X-L Yang, Y-M Wu, X-H Chen, H-B Huang, H-L Liu, S-H Cai, J. Du and H-S Wang

© The Author(s) 2025

*Cell Death and Disease* (2025)16:739; <https://doi.org/10.1038/s41419-025-07995-1>

Correction to: *Cell Death and Disease* <https://doi.org/10.1038/cddis.2014.398>, published online 2 October 2014

Our internal review identified one duplication within our manuscript, specifically where the p-p38 band in Figure 5a overlaps with the cyclin E band in Figure 5d. This issue likely arose during the figure assembly process due to a copy-paste error, particularly when using the template of Figure 5d to prepare Figure 5a, resulting in the cyclin E band from Figure 5d overlaying the p-p38 band in Figure 5a. We have thoroughly reviewed our original data. However, due to the significant time elapsed since the experiment and the graduation of the involved students, we were able to locate the original data for the cyclin E band in Figure 5d, but not the original p-p38 band data for Figure 5a.

To rigorously address this, we repeated the experiments related to Figure 5a three times. Antibodies used: p-p38 (Santa Cruz, sc-166182), p38 (Santa Cruz, sc-81621), GAPDH (CST, 51745). Experiments were repeated under identical conditions as the original study (SkBr3 cells were treated with 1  $\mu$ M G-1 for the indicated time periods, and then the phosphorylation and total protein levels of p-38 were detected by Western-blotting)."

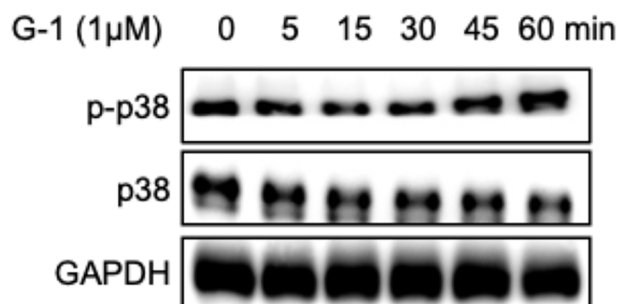
The new results (see attached raw data) consistently demonstrate that G-1 does not affect p-p38 levels, which aligns with the original conclusion. Nonetheless, to uphold the highest standards of data accuracy, we propose the following correction:

- **Replace Figure 5a** with representative data from our replicated experiments, clearly labeled as such in the corrected figure.

Due to an oversight in figure selection, the original representative image of Figure 5 A (p-p38) is incorrect. However, this does not

affect the experimental conclusions. Therefore, it is necessary to correct Figure 5 A (p-p38).

Figure 5 A



**Figure 5 A** SkBr3 cells were treated with 1  $\mu$ M G-1 for the indicated time periods, and then the phosphorylation and total protein levels of p-38 were detected by Western-blotting.



**Open Access** This article is licensed under a Creative Commons Attribution 4.0 International License, which permits use, sharing, adaptation, distribution and reproduction in any medium or format, as long as you give appropriate credit to the original author(s) and the source, provide a link to the Creative Commons licence, and indicate if changes were made. The images or other third party material in this article are included in the article's Creative Commons licence, unless indicated otherwise in a credit line to the material. If material is not included in the article's Creative Commons licence and your intended use is not permitted by statutory regulation or exceeds the permitted use, you will need to obtain permission directly from the copyright holder. To view a copy of this licence, visit <http://creativecommons.org/licenses/by/4.0/>.

© The Author(s) 2025