

CORRECTION OPEN



Correction: LINC01016 promotes the malignant phenotype of endometrial cancer cells by regulating the miR-302a-3p/miR-3130-3p/NFYA/SATB1 axis

Xin Pan, Da Li, Jianing Huo, Fanfei Kong, Hui Yang and Xiaoxin Ma

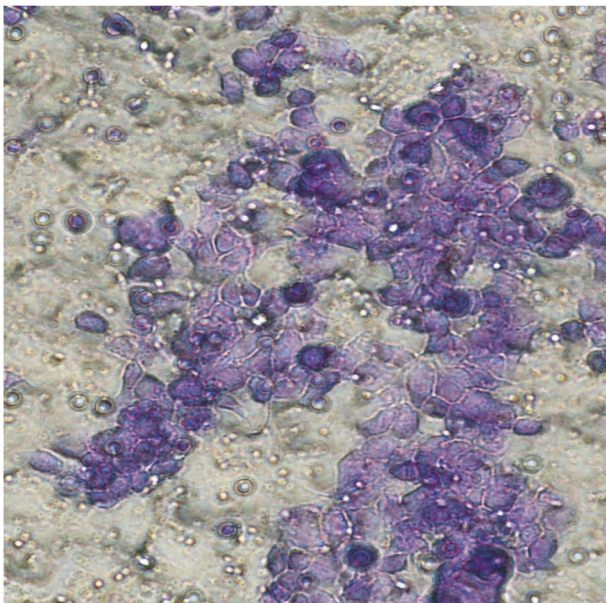
© The Author(s) 2025

Cell Death and Disease (2026)17:146; <https://doi.org/10.1038/s41419-025-08385-3>

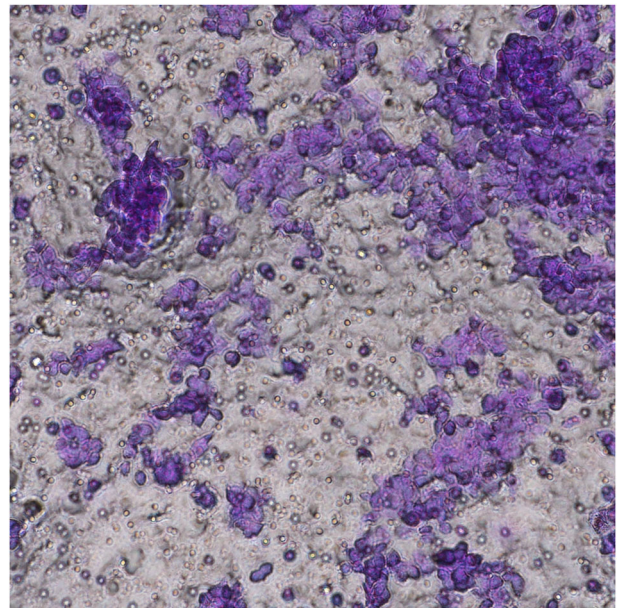
Correction to: *Cell Death & Disease* <https://doi.org/10.1038/s41419-018-0291-9>, published online 21 February 2018

The two images, the fourth image in RL-95-2 group in Fig. 1 and the fifth image in RL-95-2 group in Fig. 2, were taken repeatedly from the same viewpoint and have duplicate parts. The original intent was to select a clearer and more aesthetically pleasing image to show in the paper, but an error occurred during the image insertion process. These corrections do not significantly impact the overall findings and conclusions of the paper.

Incorrect Fig. 1



Correct Fig. 1



Open Access This article is licensed under a Creative Commons Attribution 4.0 International License, which permits use, sharing, adaptation, distribution and reproduction in any medium or format, as long as you give appropriate credit to the original author(s) and the source, provide a link to the Creative Commons licence, and indicate if changes were made. The images or other third party material in this article are included in the article's Creative Commons licence, unless indicated otherwise in a credit line to the material. If material is not included in the article's Creative Commons licence and your intended use is not permitted by statutory regulation or exceeds the permitted use, you will need to obtain permission directly from the copyright holder. To view a copy of this licence, visit <http://creativecommons.org/licenses/by/4.0/>.

© The Author(s) 2025