

**OPEN**

Author Correction: Disruption of SHH signaling cascade by SBE attenuates lung cancer progression and sensitizes DDP treatment

Jing Du, Weiwei Chen, Lijuan Yang, Juanjuan Dai, Jiwei Guo, Yan Wu, Kaikai Gong, Jian Zhang, Ning Yu, Zhen Xie & Sichuan Xi

Correction to: *Scientific Reports* <https://doi.org/10.1038/s41598-017-02063-x>, published online 15 May 2017

This Article contains errors.

In Figure 6C, the image for SBE at 0h (A549 cells) was inadvertently duplicated for Combi at 0 h (A549 cells). The correct Figure 6C appears below as Fig. 1.

In Figure 3F, “CDK4” was mislabelled as “Cyclin D”. The correct Figure 3F appears below as Fig. 2.

These changes do not affect the conclusions of the Article.

Published online: 22 October 2020

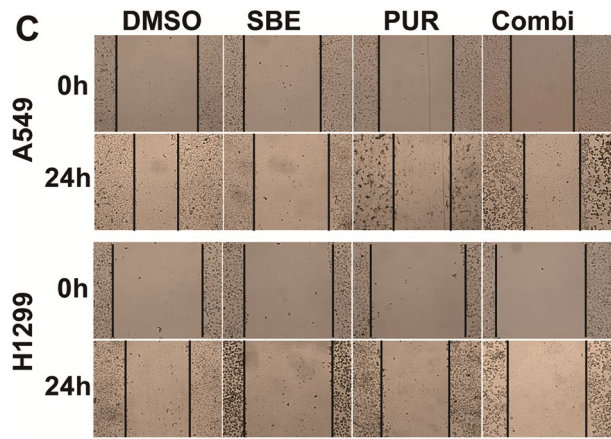


Figure 1. A corrected version of Figure 6C in the Article.

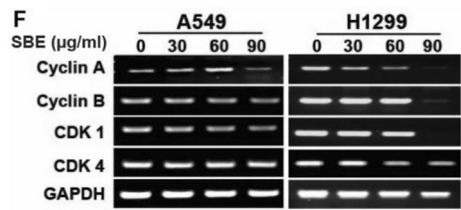



Figure 2. A corrected version of Figure 3F in the Article.

 **Open Access** This article is licensed under a Creative Commons Attribution 4.0 International License, which permits use, sharing, adaptation, distribution and reproduction in any medium or format, as long as you give appropriate credit to the original author(s) and the source, provide a link to the Creative Commons licence, and indicate if changes were made. The images or other third party material in this article are included in the article's Creative Commons licence, unless indicated otherwise in a credit line to the material. If material is not included in the article's Creative Commons licence and your intended use is not permitted by statutory regulation or exceeds the permitted use, you will need to obtain permission directly from the copyright holder. To view a copy of this licence, visit <http://creativecommons.org/licenses/by/4.0/>.

© The Author(s) 2020