



OPEN

# Publisher Correction: Sortilin knock-down alters the expression and distribution of cathepsin D and prosaposin and up-regulates the cation-dependent mannose-6-phosphate receptor in rat epididymal cells

Andrea Carolina Aguilera, Natalia Leiva, Pablo Ariel Alvarez, Georgina Pulcini, Laura Lucía Pereyra, Carlos Ramón Morales, Miguel Ángel Sosa & Lorena Carvelli

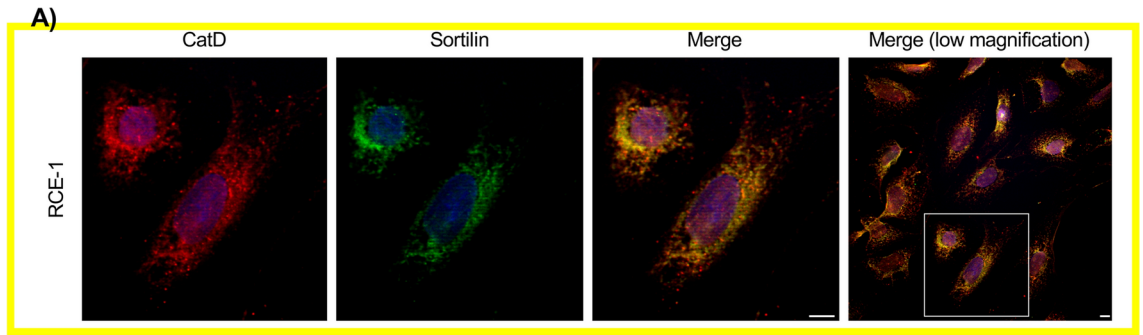
Correction to: *Scientific Reports* <https://doi.org/10.1038/s41598-023-29157-z>, published online 01 March 2023

Figure 1 in the original version of this Article displayed a yellow border which was redundant and consequently removed.

The original Figure 1 and accompanying legend appear below.

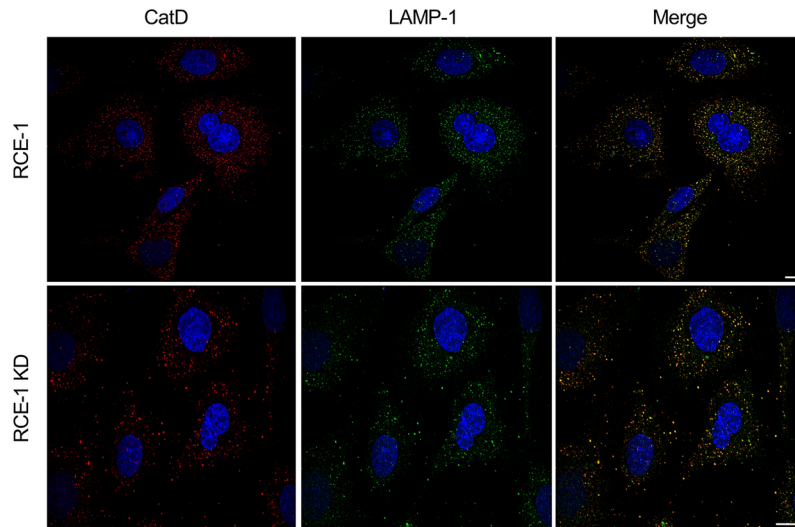
The original Article has been corrected.

Published online: 13 March 2023



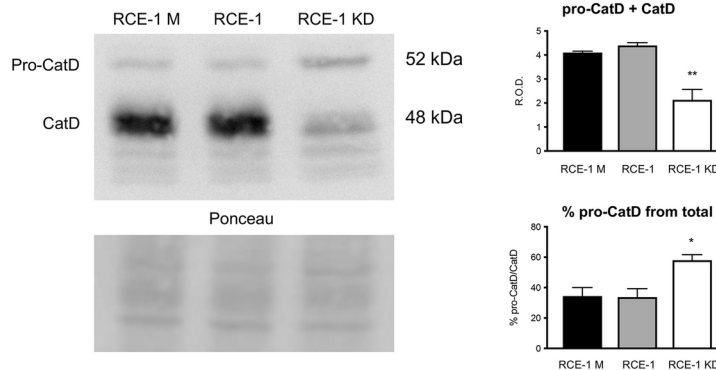
	MCC-M1	MCC-M2
RCE-1	0,976 ± 0,052	0,931 ± 0,043

**B)**



	MCC-M1	MCC-M2
RCE-1	0,90 ± 0,024	0,73 ± 0,025
RCE-1 KD	0,766 ± 0,03*	0,67 ± 0,06

**C)**



**Figure 1.** Effect of sortilin depletion on the distribution and processing of Cathepsin D in RCE-1 cells. **(A)** Immunofluorescence staining of sortilin and CatD in the RCE1 cells. Confocal representative images and quantification of co-localization of sortilin and CatD (MCC-M1); CatD and sortilin (MCC-M2). The shown cells were taken from the framed area of the lower magnification image (right merge). **(B)** Representative immunofluorescence staining of CatD and LAMP-1 in RCE1 and RCE-1 KD cells. Quantification of co-localization of LAMP-1 and CatD (MCC-M1); CatD and LAMP-1 (MCC-M2). Values are expressed as the means of Manders colocalization coefficients 1 and 2 (MCC-M1 and MCC-M2, respectively) ± SEM. (\*) significant difference from RCE-1 ( $p < 0.01$ ). Scale bars = 10  $\mu$ m. **(C)** Representative immunoblot of CatD in RCE-1 M (mock-depleted), RCE-1 and RCE-1 KD cells. Bands intensities of pro-CatD (52 kDa) and CatD (48 kDa) were quantified separately. Bars represent the means of the total CatD (pro-CatD + CatD), as relative optical densities (R.O.D.) ± SEM (upper histogram) and the means of pro-CatD percentage in each sample ± SEM (lower histogram) from four independent experiments. (\*) and (\*\*) significant differences ( $p < 0.01$  and  $p < 0.05$ , respectively). Ponceau S staining were used as loading control. The full-length immunoblot is presented in Supplementary Fig. 2.



**Open Access** This article is licensed under a Creative Commons Attribution 4.0 International License, which permits use, sharing, adaptation, distribution and reproduction in any medium or format, as long as you give appropriate credit to the original author(s) and the source, provide a link to the Creative Commons licence, and indicate if changes were made. The images or other third party material in this article are included in the article's Creative Commons licence, unless indicated otherwise in a credit line to the material. If material is not included in the article's Creative Commons licence and your intended use is not permitted by statutory regulation or exceeds the permitted use, you will need to obtain permission directly from the copyright holder. To view a copy of this licence, visit <http://creativecommons.org/licenses/by/4.0/>.

© The Author(s) 2023