



OPEN

# Publisher Correction: Total and regional appendicular skeletal muscle mass prediction from dual-energy X-ray absorptiometry body composition models

Cassidy McCarthy, Grant M. Tinsley, Anja Bosy-Westphal, Manfred J. Müller, John Shepherd, Dympna Gallagher & Steven B. Heymsfield

Correction to: *Scientific Reports* <https://doi.org/10.1038/s41598-023-29827-y>, published online 14 February 2023

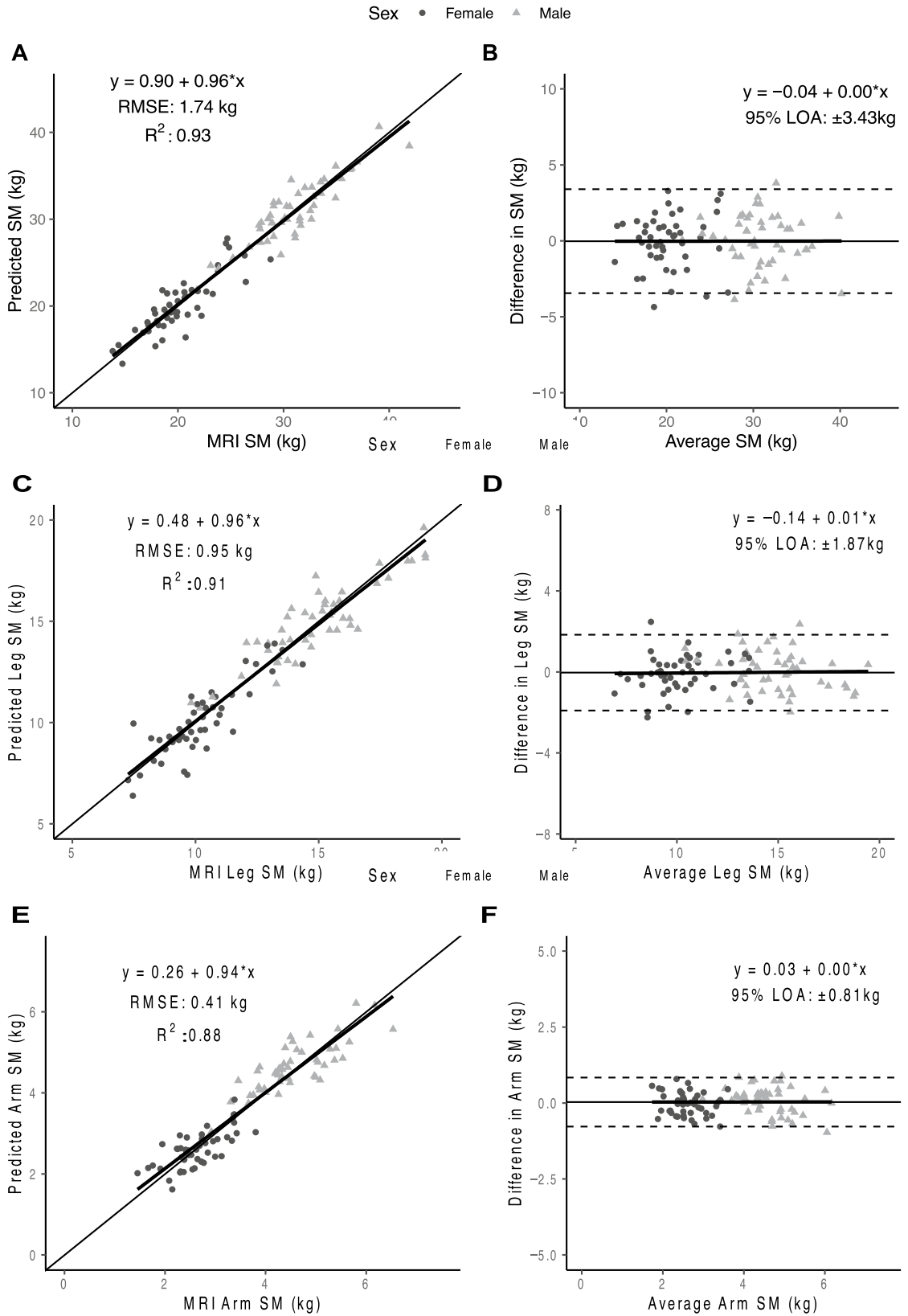
The original version of this Article contained errors.

In Figures 2 and 3, the labels and text did not display correctly.

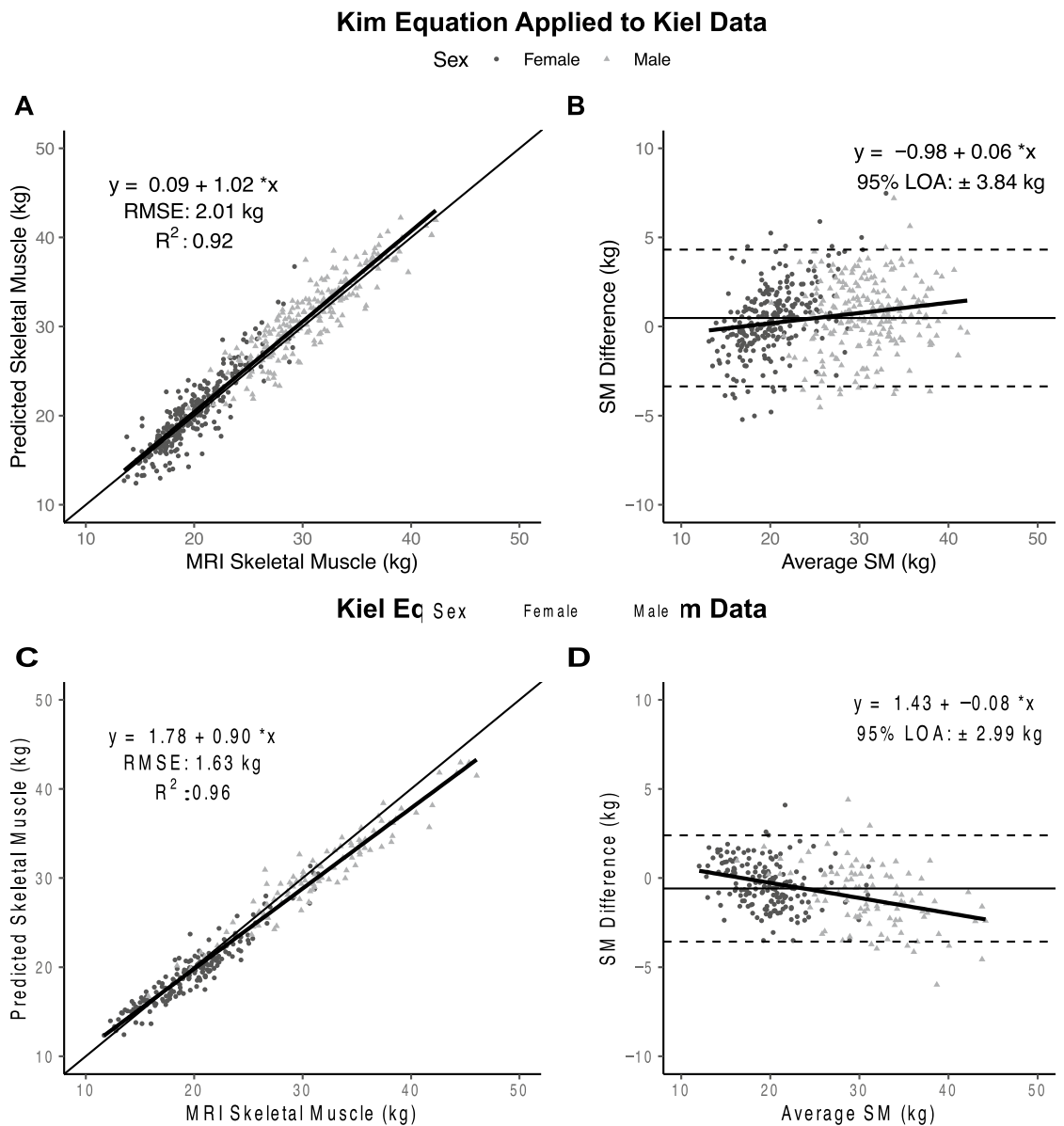
The original Figures 2 and 3 and accompanying legends appear below.

The original Article has been corrected.

Published online: 09 August 2023



**Figure 2.** Predicted total, arm, and leg skeletal muscle (SM) mass versus corresponding value measured with MRI in the validation sample (n = 47 women; 48 men) on the left (A,C,E) and associated Bland–Altman plots on the right (B,D,F). The regression equations, lines, R<sup>2</sup>s, and 95% limits of agreement (LOA) are shown in the figures. The statistical significance of each panel is summarized in the text.



**Figure 3.** Total skeletal muscle (SM) mass predicted by Kim's equation<sup>8</sup> versus SM measured with MRI at Kiel (A) and corresponding Bland–Altman plot (B) (n = 475). Total body skeletal muscle (SM) mass predicted by the newly developed Kiel equation versus SM measured with MRI by Kim et al.<sup>8</sup> (C) and corresponding Bland–Altman plot (D) (n = 270). The lines of identity (thin solid line), regression equations and lines (solid lines with gray shading indicating 95% CI), and  $R^2$ s are shown in (A,C). The regression lines with 95% CI and 95% limits of agreement (LOA) (dashed lines) are shown in (B,D). Statistical significance of each panel is summarized in the text.



**Open Access** This article is licensed under a Creative Commons Attribution 4.0 International License, which permits use, sharing, adaptation, distribution and reproduction in any medium or format, as long as you give appropriate credit to the original author(s) and the source, provide a link to the Creative Commons licence, and indicate if changes were made. The images or other third party material in this article are included in the article's Creative Commons licence, unless indicated otherwise in a credit line to the material. If material is not included in the article's Creative Commons licence and your intended use is not permitted by statutory regulation or exceeds the permitted use, you will need to obtain permission directly from the copyright holder. To view a copy of this licence, visit <http://creativecommons.org/licenses/by/4.0/>.

© The Author(s) 2023