



OPEN

Author Correction: Comprehensive analysis of TLX2 in pan cancer as a prognostic and immunologic biomarker and validation in ovarian cancer

Buze Chen, Xiaojuan Ding, Ailing Wan, Xin Qi, Xiaoman Lin, Haihong Wang, Wenyu Mu, Gang Wang & Junnian Zheng

Correction to: *Scientific Reports* <https://doi.org/10.1038/s41598-023-42171-5>, published online 27 September 2023

The original version of this Article contained errors in Figure 12, where panels B and C as well as panels E and F were reversed. The original Figure 12 and accompanying legend appear below.

The original Article has been corrected.

Published online: 17 October 2023

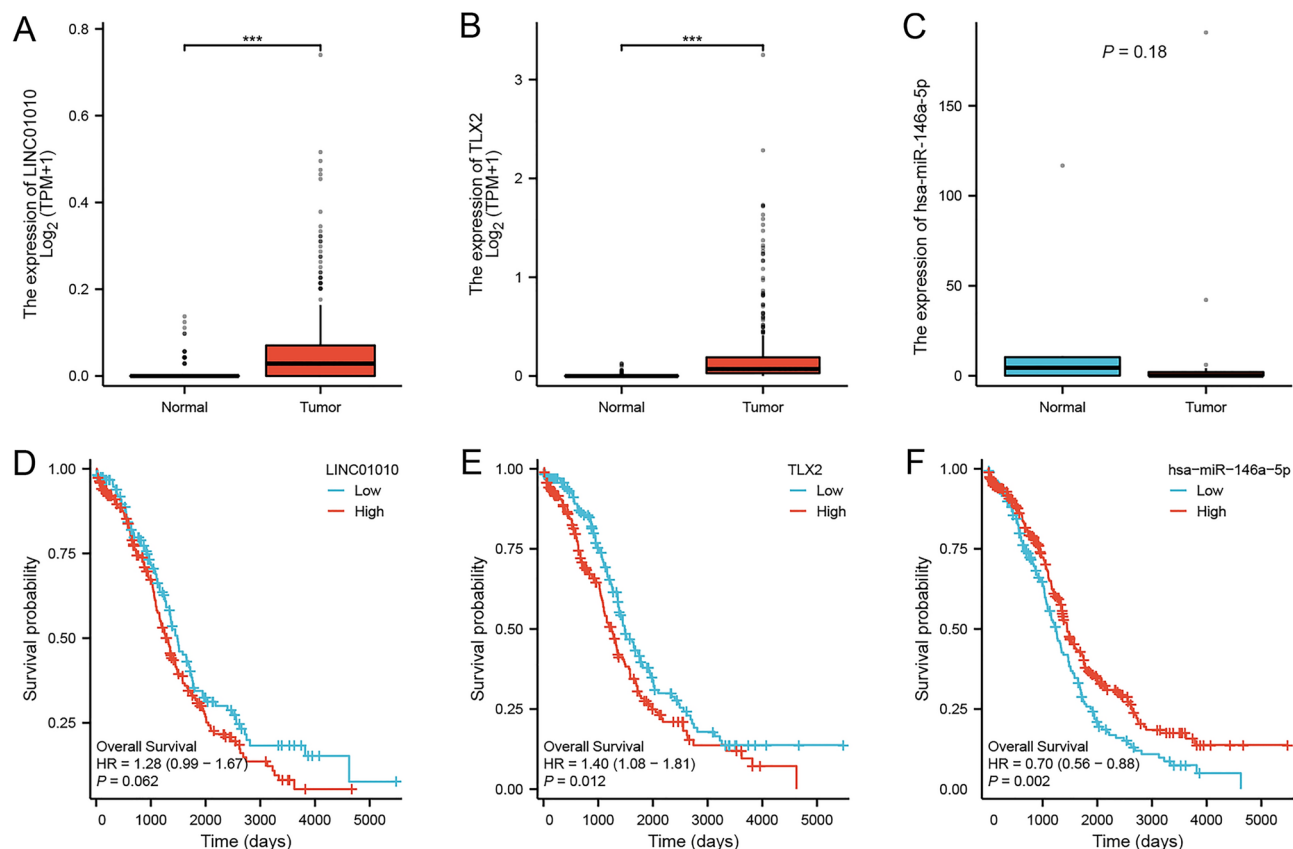


Figure 12. Differential expression of *TLX2*-mediated ceRNA network in OC and correlation with prognosis. **(A)** Differential expression of *LINC01010* in OC tumor tissues and normal tissues. **(B)** Differential expression of *miR-146a-5p* in OC tumor tissues and normal tissues. **(C)** Differential expression of *TLX2* in OC tumor tissues and normal tissues. **(D)** Prognostic value of *LINC01010* in OC. **(E)** Prognostic value of *miR-146a-5p* in OC. **(F)** Prognostic value of *TLX2* in OC.

Open Access This article is licensed under a Creative Commons Attribution 4.0 International License, which permits use, sharing, adaptation, distribution and reproduction in any medium or format, as long as you give appropriate credit to the original author(s) and the source, provide a link to the Creative Commons licence, and indicate if changes were made. The images or other third party material in this article are included in the article's Creative Commons licence, unless indicated otherwise in a credit line to the material. If material is not included in the article's Creative Commons licence and your intended use is not permitted by statutory regulation or exceeds the permitted use, you will need to obtain permission directly from the copyright holder. To view a copy of this licence, visit <http://creativecommons.org/licenses/by/4.0/>.

© The Author(s) 2023