



OPEN

Correction: Lipodendriplexes mediated enhanced gene delivery: a cellular to pre-clinical investigation

Published online: 08 January 2026

Imran Tariq, Muhammad Yasir Ali, Muhammad Farhan Sohail, Muhammad Umair Amin, Sajid Ali, Nadeem Irfan Bukhari, Abida Raza, Shashank Reddy Pinnapireddy, Jens Schäfer & Udo Bakowsky

Correction to: *Scientific Reports* <https://doi.org/10.1038/s41598-020-78123-6>, published online 08 December 2020

This Article contains errors in Figure 7, where panel E incorrectly shows muscle tissue, instead of liver tissue for 'Liver', 'Untreated' and 'Lipodendriplexes'.

The correct Figure 7 and accompanying legend appear below.

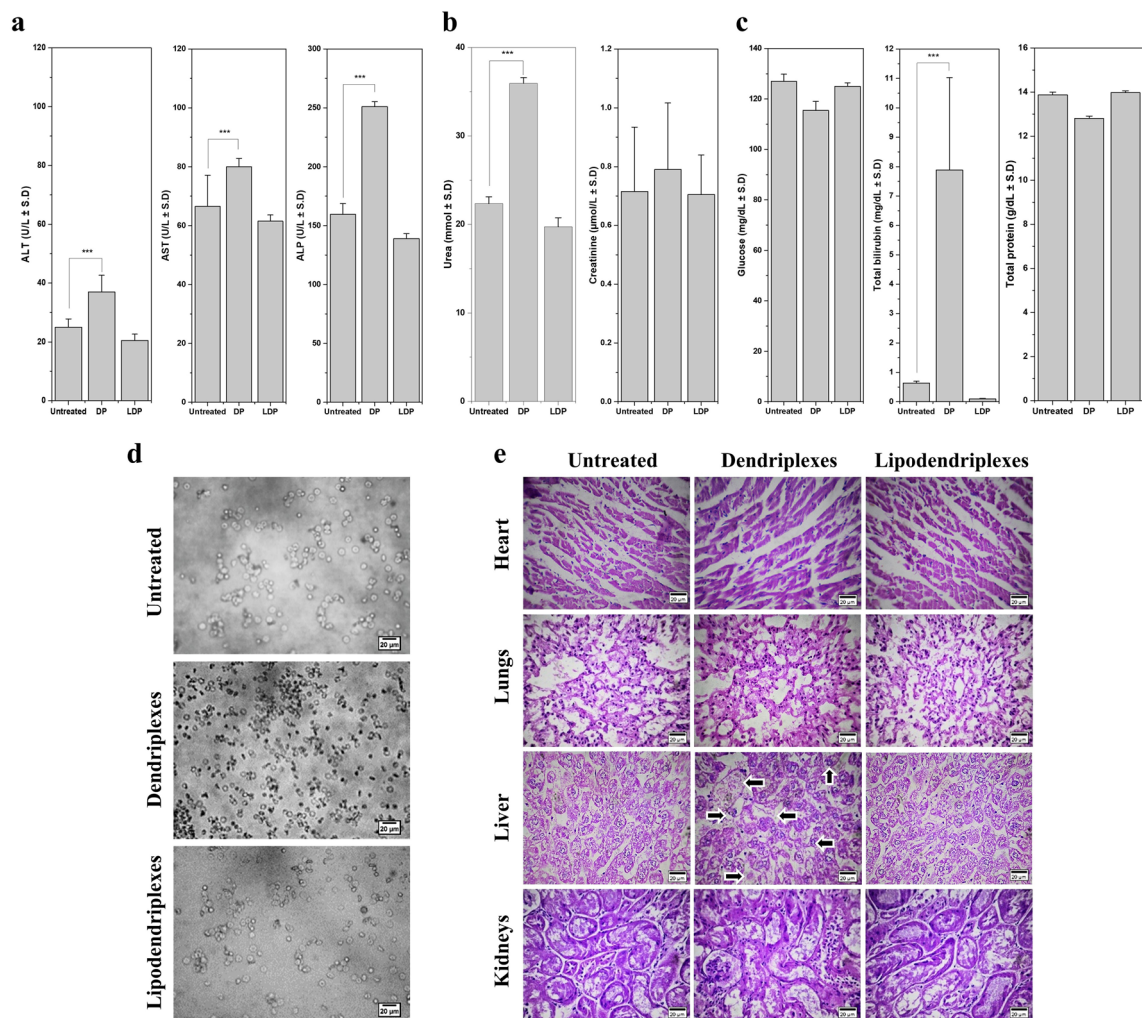


Fig. 7. Typical serum biochemical markers, erythrocytes aggregation and histopathological investigations of an untreated group and after *i.v.* administration of the complexes containing 10 µg of pDNA (dendriplexes and lipodendriplexes of DPPC: CH-PAMAM; liposome to PAMAM dendrimer mass ratio 0.5/1 with N/P ratio 12/1). **(a)** Liver function tests (LFTs) parameters including ALT, AST and ALP levels. **(b)** Renal function tests (RFTs) parameters including blood urea nitrogen and creatinine levels. **(c)** Blood glucose, total bilirubin and total protein. **(d)** Ex vivo erythrocytes aggregation assay after treatment of complexes with 100 µl of erythrocytes suspension (2% v/v). Scale bar represents 20 µm. **(e)** H&E stained sections of vital organs from mice (heart, lungs, liver and kidney). All images were taken at ×40 magnification. Scale bar represents 20 µm. Values are represented as mean ± SD (n = 3) and statistical significances are indicated as **p < 0.01, ***p < 0.001.

Open Access This article is licensed under a Creative Commons Attribution 4.0 International License, which permits use, sharing, adaptation, distribution and reproduction in any medium or format, as long as you give appropriate credit to the original author(s) and the source, provide a link to the Creative Commons licence, and indicate if changes were made. The images or other third party material in this article are included in the article's Creative Commons licence, unless indicated otherwise in a credit line to the material. If material is not included in the article's Creative Commons licence and your intended use is not permitted by statutory regulation or exceeds the permitted use, you will need to obtain permission directly from the copyright holder. To view a copy of this licence, visit <http://creativecommons.org/licenses/by/4.0/>.

© The Author(s) 2026